



Learn. Make. Love.

Artful Nursery Mini Quilt



SIY-Sew It Yourself™ Project

PROJECT DISCLAIMER: Every effort has been made to ensure that all projects are error free. All the information is presented in good faith, however no warranty can be given not results guaranteed as we have no control over the execution of instructions. Therefore, we assume no responsibility for the use of this information or damages that may occur as a result. When errors are brought to our attention, we make every effort to correct and post a revision as soon as possible. We recommend that you test the project prior to cutting for kits. Finally, all free projects are intended to remain free to you and are not for resale.

SIY - Sew It Yourself™ is a trademark of JafTex Corporation

Artful Nursery Mini Quilt

Featuring: FreeSpirit Fabrics Mythical by Stacy Peterson

Pattern by: Lindsay Conner

Sewn by: Lindsay Conner



Give your little one's nursery a modern mini quilt, or decorate any room you choose with this stylish fabric wall art. Made from beginner-friendly half-square triangles, this wall quilt is perfect for showing off prints from a collection. Adding a strip of fringe on the bottom takes it to the next level, adding a bit of bohemian flair! Could there be a more perfect first quilting project?

Skills Learned: Basic machine sewing, quilting, applying fringe

Skill Level: Advanced Beginner

Finished Size: 16" x 27" (40.64cm x 68.58cm)

Fabric Needed:

Background Fabric: (10) 6" squares and (12) 3-7/8" squares. I used:

- FreeSpirit Designer Essential Solids – Mist CSFSESS.MISTX

Fabric prints: (2) 6" squares of 5 different prints. I used:

- Dawn – PWST022.XMULTI
- Fiddlehead –PWST025.XCARNATION
- It's a Phase – PWST014.XBLUSH
- Owl See You – PWST023.XMAGENTA
- Small Mythical Iris – PWST018.XDEEPBLUE

Backing fabric: ½ yard (.46m), cut to 17-3/8" x 27-1/2" (44.23cm x 69.85cm). I used:

- Fabled Forest – PWST013.XTEAL

Quilt batting: 20" x 31" (50.80cm) x (78.74cm)

Boho fringe cotton tassel, 17" long x 2" wide (43.18cm x 5.08cm)



Equipment Needed:

Sewing machine, iron, and thread

Binding clips

Basting spray

Scissors, rotary cutter, ruler, and cutting mat

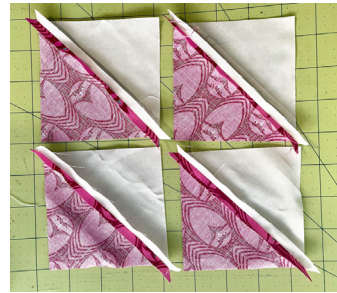
Safety pin (optional) for hanging

Instructions: Make the Half-Square Triangles

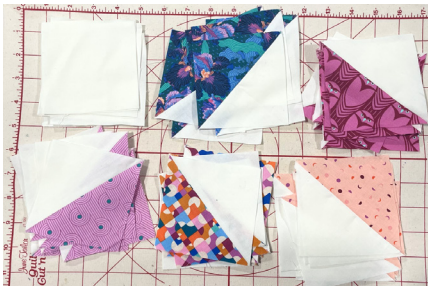
1) Place a 6" print square right sides together with a 6" background square. Sew all around the perimeter with a $\frac{1}{4}$ " seam allowance.

2) Using a ruler and rotary cutter, cut two diagonal lines through opposite corners of the square to make 4 half-square triangles.

3) Open up the half-square triangles, press the seams open, and trim off the dog ears (corners) so they are $3\frac{7}{8}$ " square.



4) Repeat steps 1-3 with the other 6" print and solid squares to make a total of 40 half-square triangles. You will not use all of them in this project.



5) Using a felt design board, a tabletop, or floor, lay out the half-square triangle blocks (HST) as pictured, adding in solid $3\frac{7}{8}$ " background squares (B).

Column 1: 1 B, 5 HST, 2 B

Column 2: 2 HST, 1 B, 4 HST, 1 B

Column 3: 1 B, 2 HST, 1 B, 4 HST

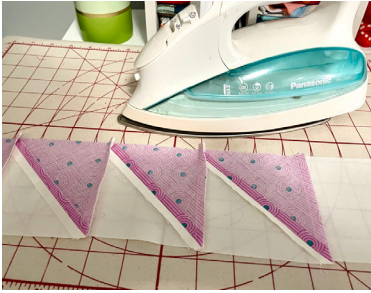
Column 4: 4 HST, 1 B, 2 HST, 1 B

Column 5: 2 B, 4 HST, 1 B, 1 HST

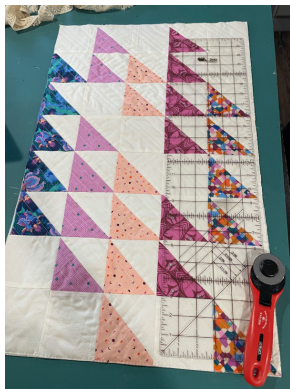


Instructions: Sew the Blocks in Each Column Together

- 6) Press the blocks in each column, either up or down, alternating the direction of the seams in each row.
- 7) Clip and sew two adjacent rows together, nesting the seams as you go. Continue until all 5 columns are sewn together.



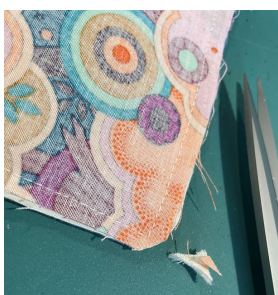
- 8) Press the quilt top and use basting spray to adhere it to a piece of quilt batting. Ideally, the batting will extend 2" past the quilt top on each side. I used a scrap piece that JUST fit! Quilt diagonal lines through the quilt top and batting.
- 9) Trim the excess batting from around the quilt using a ruler and rotary cutter.



- 10) Clip the 17" strip of boho fringe on the right side of the quilt along the bottom edge. Stitch it in place using a 1/8" seam allowance.
- 11) Place the quilt back fabric right sides together with the quilted top. Clip in place and stitch using a 1/4" seam allowance all the way around, leaving a 4" gap along the top edge (without the boho fringe).



- 12) Use scissors to gently round the corners of the quilt, making sure not to clip into the seam allowance.

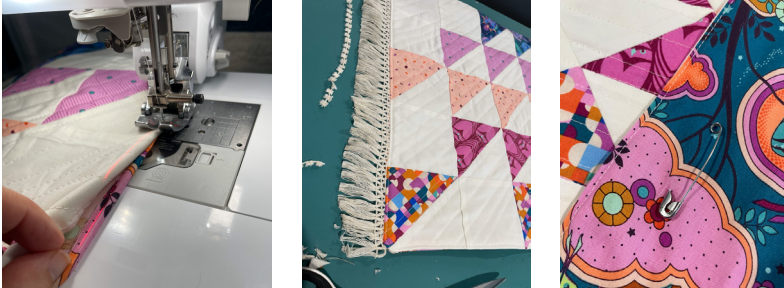


13) Turn the quilt right side out through the 4" gap in the top side and gently poke out the corners with your fingers. Press the quilt, making sure to turn the edges of the 4" gap inside the quilt. Topstitch all around the perimeter of the quilt 1/8" from the edge, closing the gap.

14) Use scissors to trim off the ends of the boho fringe.

Tip: You may want to use clear nail polish or school glue on the ends to keep it from unraveling.

15) Center a large safety pin on the top edge of the back of the mini quilt. This can be used to easily hang the quilt on a nail in the wall! Use two safety pins in the corners if you prefer.



There you have it! I hope you enjoyed sewing this modern mini quilt, which adds a pop of color and pattern to your walls. Happy sewing!

