

JAFTEX

EST. 1930

Free Spirit

Henry Glass & Co., Inc.

STUDIO fabrics
A Division Of JafTex Corporation
www.studiofabrics.net

Blank
QUILTING CORPORATION
the fabric of inspiration

3wishes
fabric

A.E. NATHAN COMPANY, INC.

Fabric
Editions, Inc.

Learn. Make. Love.

SIY Project



Sew It Yourself

The following project was created with fabric that your local retailer may no longer have available. You can re-create these projects by replacing the fabrics shown using the fabric key as a guide for similar colorations or styles.

PROJECT DISCLAIMER: Every effort has been made to ensure that all projects are error free. All the information is presented in good faith, however no warranty can be given not results guaranteed as we have no control over the execution of instructions. Therefore, we assume no responsibility for the use of this information or damages that may occur as a result. When errors are brought to our attention, we make every effort to correct and post a revision as soon as possible. We recommend that you test the project prior to cutting for kits. Finally, all free projects are intended to remain free to you and are not for resale.

SIY - Sew It Yourself™ is a trademark of JafTex Corporation

Quilted Slippers

Project Revised By:	Lindsey Johns, Inside the Hem
Technique:	Patchwork
Skill Level:	Beginner/Easy

All possible care has been taken to assure the accuracy of this pattern. We are not responsible for printing errors or the manner in which individual work varies. Please read the instructions carefully before starting this project.

Materials

- FreeSpirit fabric (100% cotton) "Next Door Garden" collection Victoria Findlay Wolfe
- The fabric is approx. 112 cm (44 inches) wide
- Outer Fabric – 68.58cm (¾ yard)
- Lining Fabric – 68.58cm (¾ yard)
- Batting for the warm inner layer – 90cm (36 inches) wide – 25 cm (10 inches)
- Foam for the soles, approx. 1 cm (⅜ inch) thick – 60x25 cm (24x10 inches)
- Non-slip fabric for bottom of soles (optional), approx. 1 cm (⅜ inch) thick – 60x25 cm (24x10 inches)
- Thread to match



Pattern Notes:

Notes:

- $\frac{3}{8}$ " seam allowances are included in the pattern pieces. If you have a narrower foot, use $\frac{1}{2}$ " seam allowances. If you have a wider foot, use a $\frac{1}{4}$ " seam allowance.
- After each construction step, press all seams and edges. This makes sewing easier and makes the seams look neater.

Cutting Instructions

Main Fabric:

Cut 4 Slipper Upper

Flip the pattern piece as needed to ensure that there are 2 fabric pieces for the left foot and 2 fabric pieces for the right foot.

Lining Fabric:

Cut 4 Slipper Upper & 2 Slipper Soles

Flip the pattern piece as needed to ensure that there are 2 upper fabric pieces for the left foot and 2 upper fabric pieces for the right foot. And 1 slipper sole for the right foot and 1 slipper sole for the left foot.

Batting:

Cut 4 Slipper Upper

Foam:

Cut 2 Slipper Soles

Cut 2 mirror images of the sole piece

Non-Slip Fabric (optional):

Cut 2 Slipper Soles

Cut 2 mirror images of the sole piece

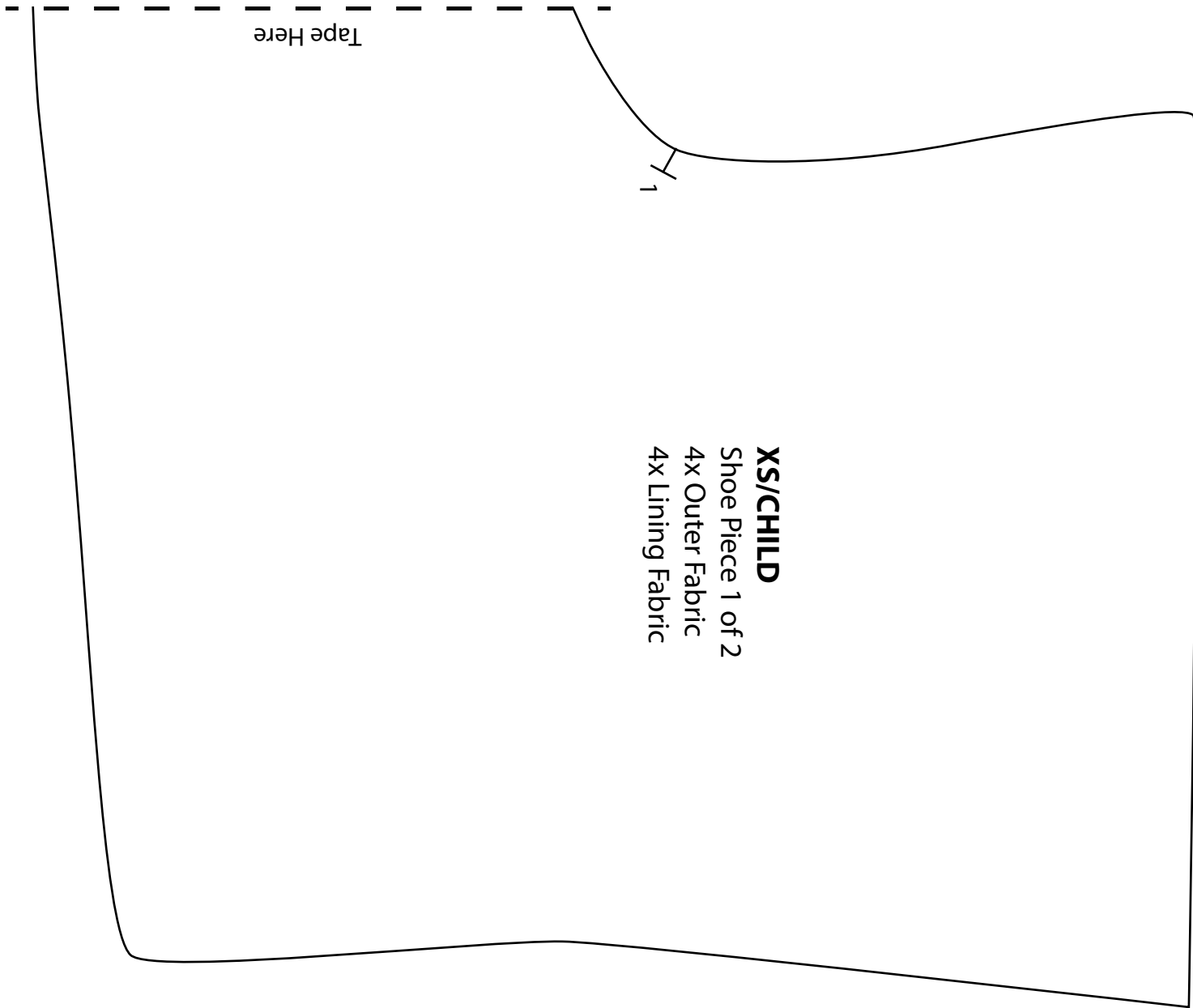
Prep Instructions

Quilt the main fabric and the batting together by laying the fabric on top of the batting and stitching the layers together with horizontal and vertical lines roughly 1" apart.

Sewing

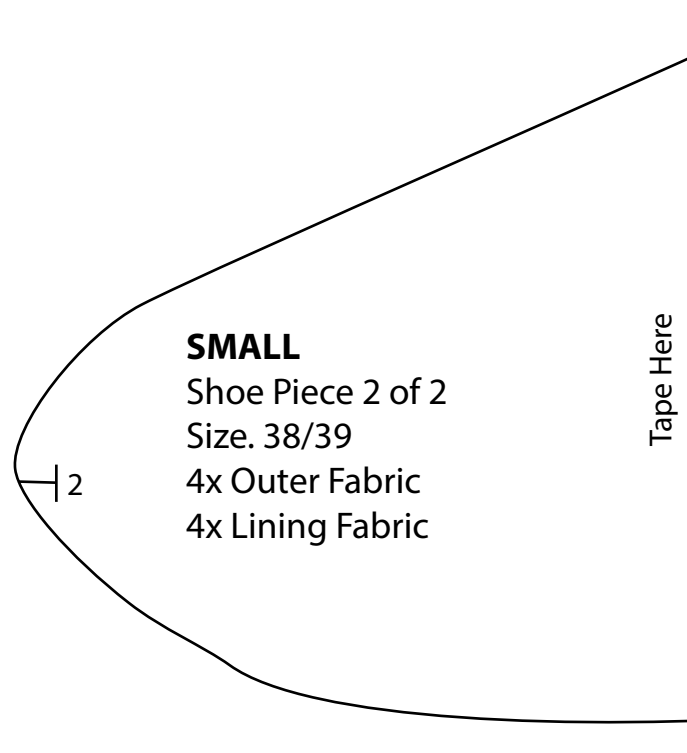
1. Lay quilted main fabric pieces together, right sides touching. Sew along the center back of the slipper from top to heel. Repeat for lining fabric pieces. Press seams open.
2. Lay the lining unit on the main unit right sides facing. Stitch together from the seam mark 1 up over the top of the slipper, through the center back seam, and down the other side of the slipper.
3. Fold the slipper in half along the center back seam so that the main fabrics are touching right sides together. Keeping the lining fabric free, stitch from seam mark 1 to seam mark 2. Repeat this step for the lining pieces, keeping the main fabric free.
4. For the soles, lay the lining fabric piece right side down, place the foam on top of that, and then the non-slip fabric right side up. Baste around the edge of the sole just inside your seam allowance.

5. Place the sole inside the slipper opening matching center front and center back seams to the notches on the sole pattern piece with the non-slip fabric side touching the right side of the main fabric. The lining should be kept free. Stitch sole to main unit.
6. Lay the lining fabric over the previous seam and stitch again attaching the upper slipper lining to the sole unit. Zigzag stitch or Serge around the raw edges of the sole. Alternatively, you could also bind those edges with bias tape.
7. Turn slipper right side out and repeat all steps for the second slipper.



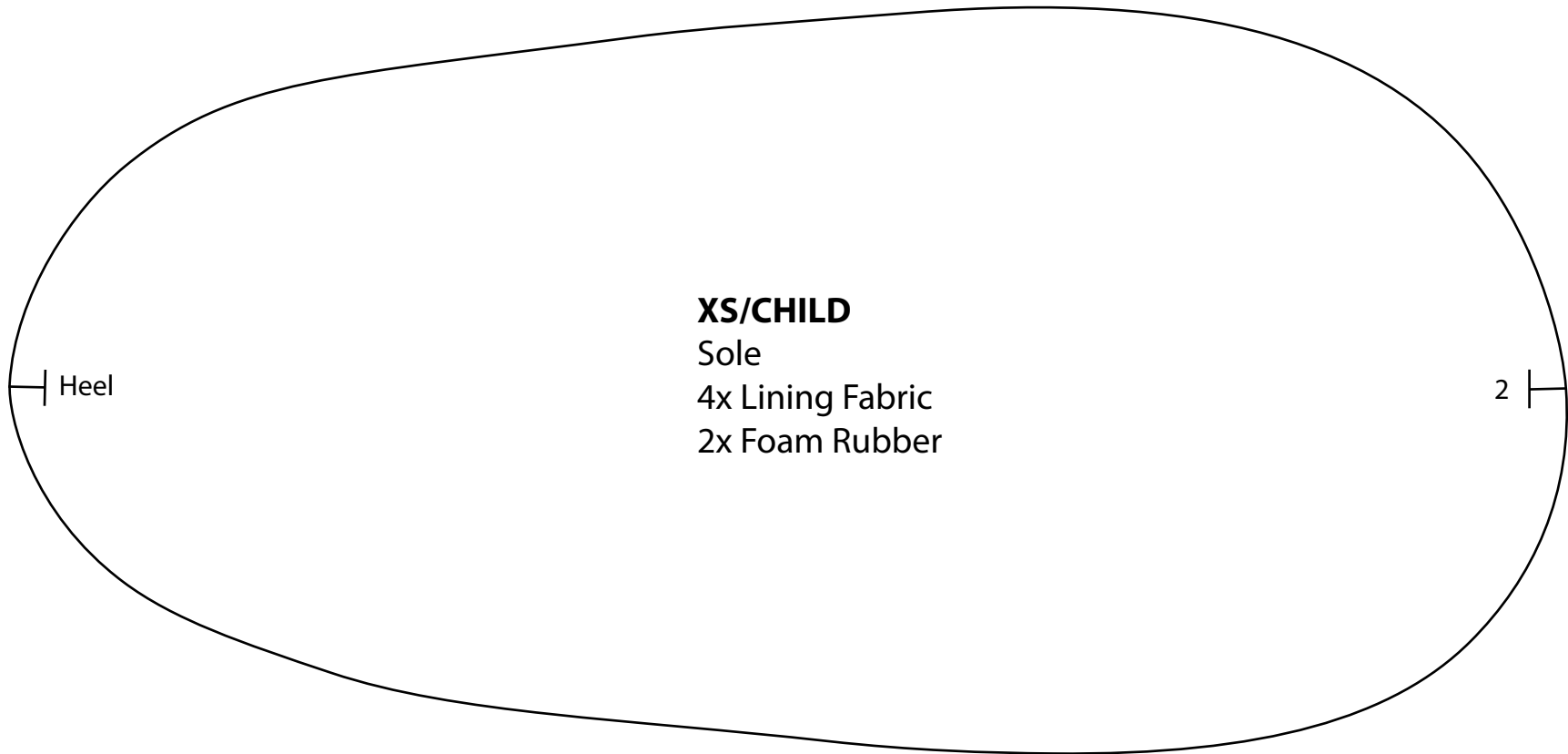
This square should measure 1" x 1" (2.54cm x 2.54cm) when printed.

***** Measure templates before cutting to confirm printing at 100%*****



This square should
measure 1" x 1"
(2.54cm x 2.54cm)
when printed.

***** Measure templates before cutting to confirm printing at 100%*****



This square should
measure 1" x 1"
(2.54cm x 2.54cm)
when printed.

***** Measure templates before cutting to confirm printing at 100%*****

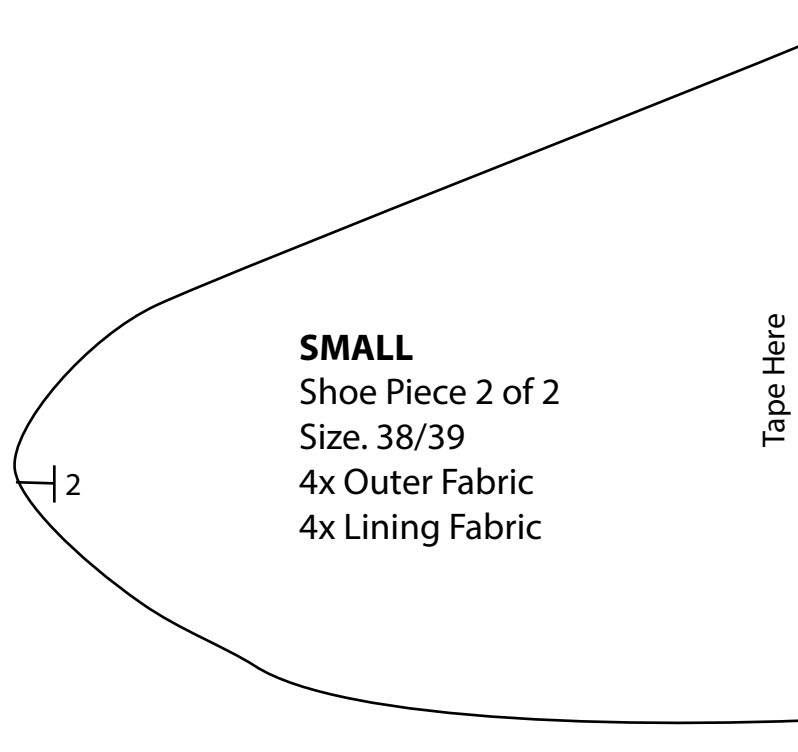
Tape Here

1

SMALL
Shoe Piece 1 of 2
Size: 38/39
4x Outer Fabric
4x Lining Fabric

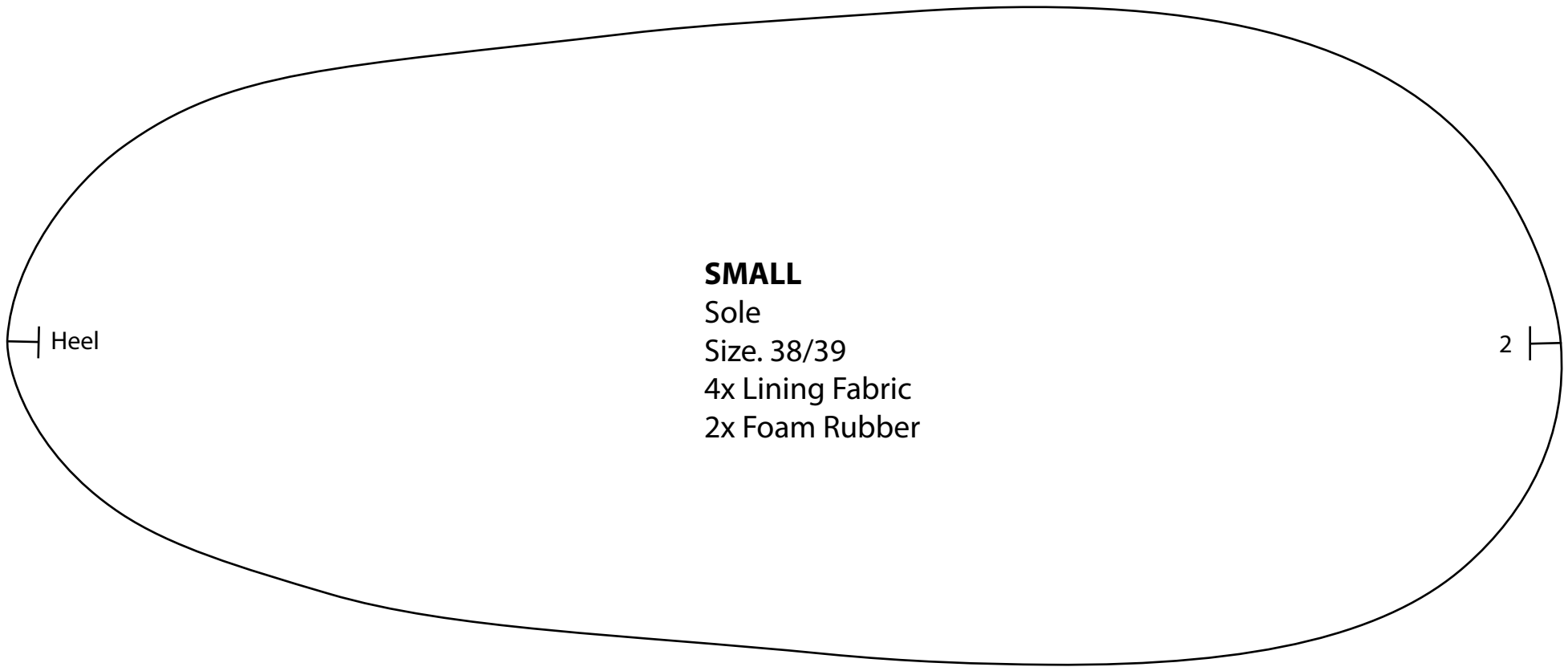
This square should
measure 1" x 1"
(2.54cm x 2.54cm)
when printed.

***** Measure templates before cutting to confirm printing at 100%*****



This square should
measure 1" x 1"
(2.54cm x 2.54cm)
when printed.

***** Measure templates before cutting to confirm printing at 100%*****



SMALL

Sole

Size. 38/39

4x Lining Fabric

2x Foam Rubber

This square should
measure 1" x 1"
(2.54cm x 2.54cm)
when printed.

***** Measure templates before cutting to confirm printing at 100%*****

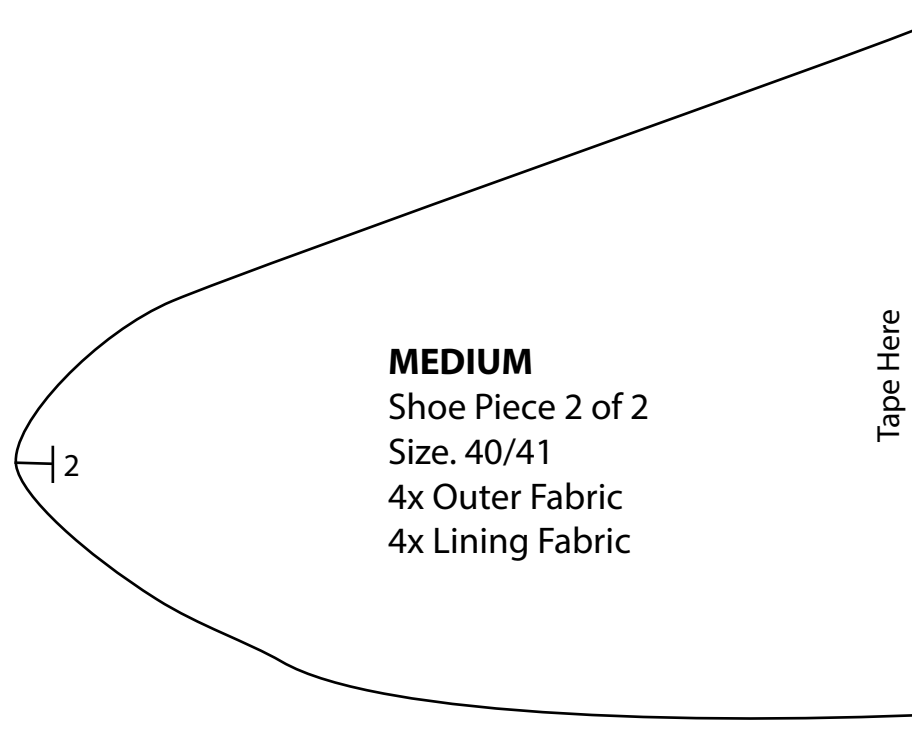
Tape Here

1

MEDIUM
Shoe Piece 1 of 2
Size. 40/41
4x Outer Fabric
4x Lining Fabric

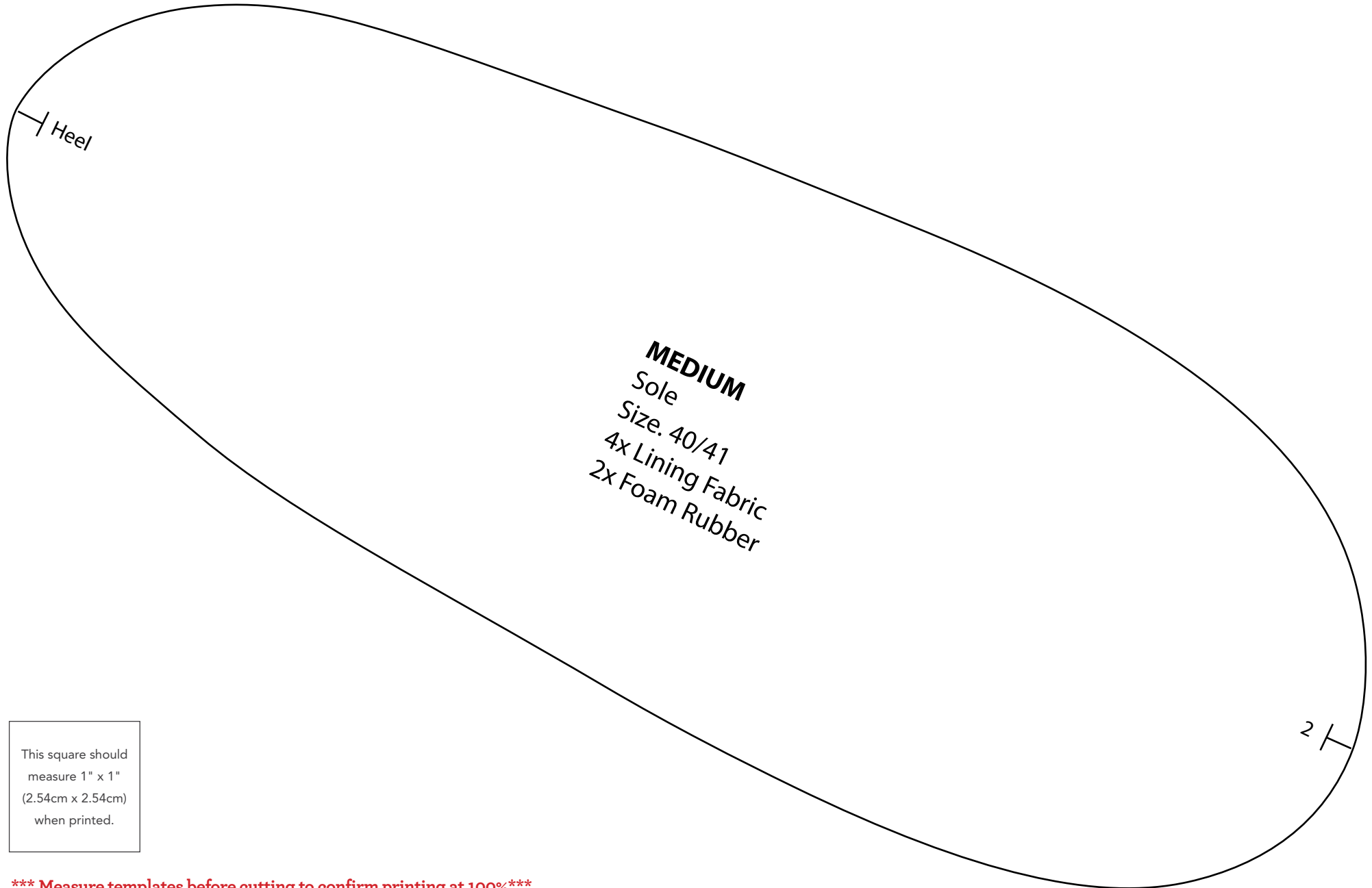
This square should
measure 1" x 1"
(2.54cm x 2.54cm)
when printed.

***** Measure templates before cutting to confirm printing at 100%*****



This square should
measure 1" x 1"
(2.54cm x 2.54cm)
when printed.

***** Measure templates before cutting to confirm printing at 100%*****



This square should measure 1" x 1" (2.54cm x 2.54cm) when printed.

***** Measure templates before cutting to confirm printing at 100%*****

Quilted Slippers

LARGE

Shoe Piece 1 of 2

Size. 42/43

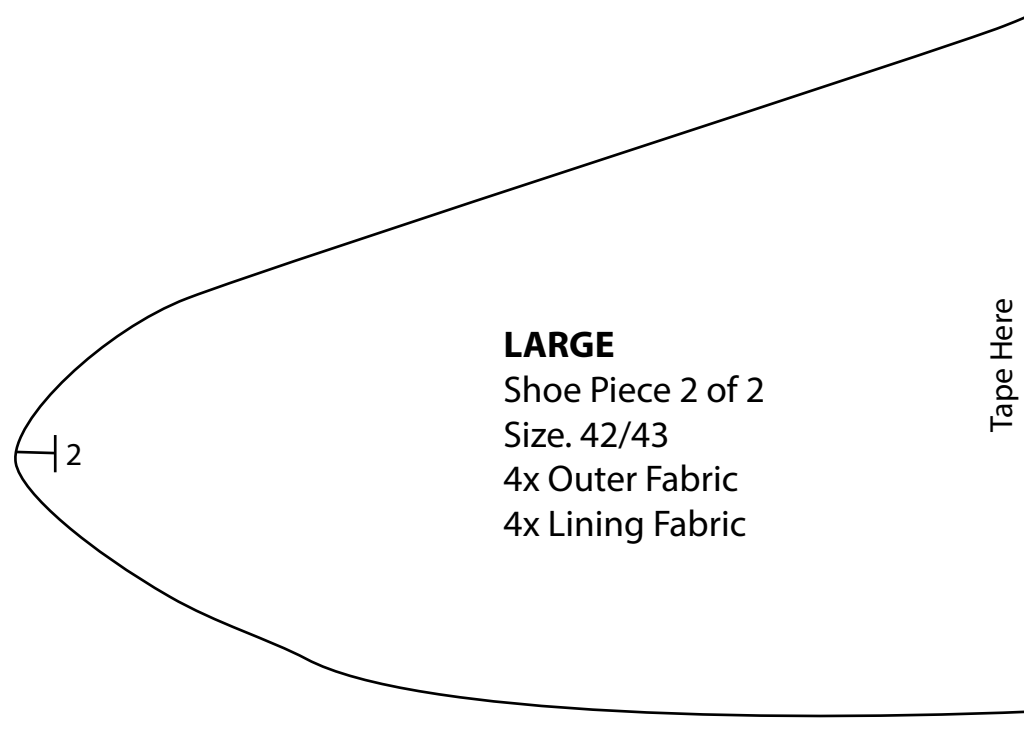
4x Outer Fabric

4x Lining Fabric

Tape Here

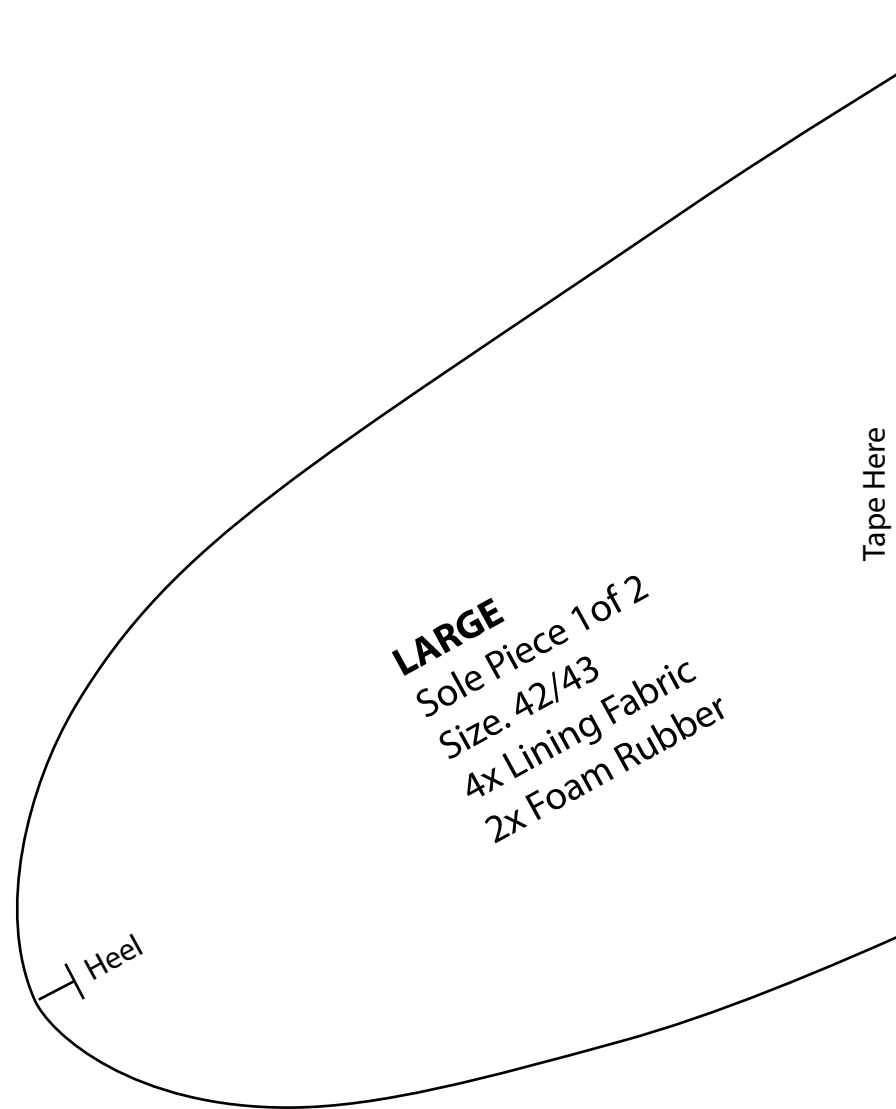
This square should
measure 1" x 1"
(2.54cm x 2.54cm)
when printed.

*** Measure templates before cutting to confirm printing at 100%***



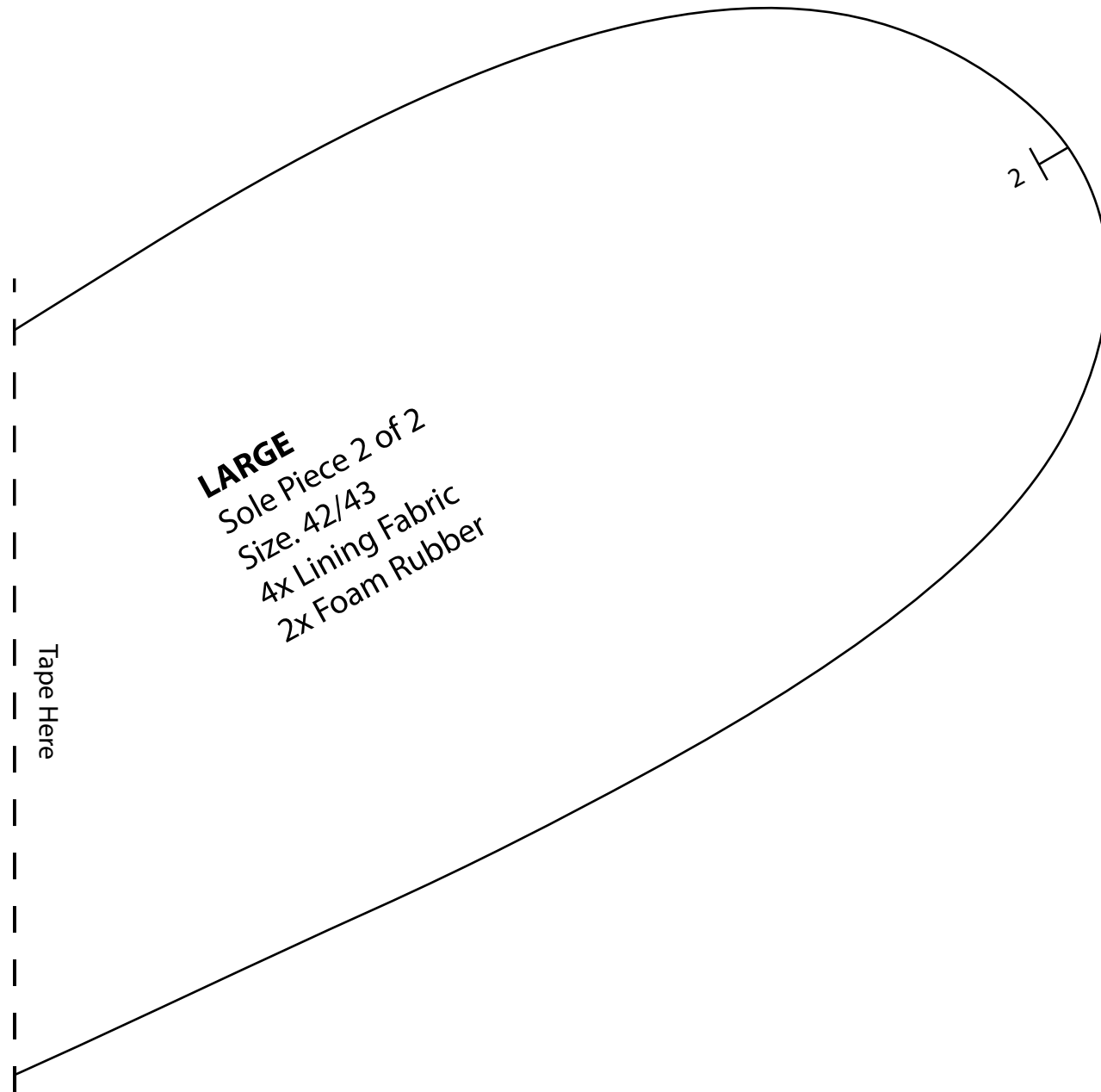
This square should measure 1" x 1" (2.54cm x 2.54cm) when printed.

***** Measure templates before cutting to confirm printing at 100%*****



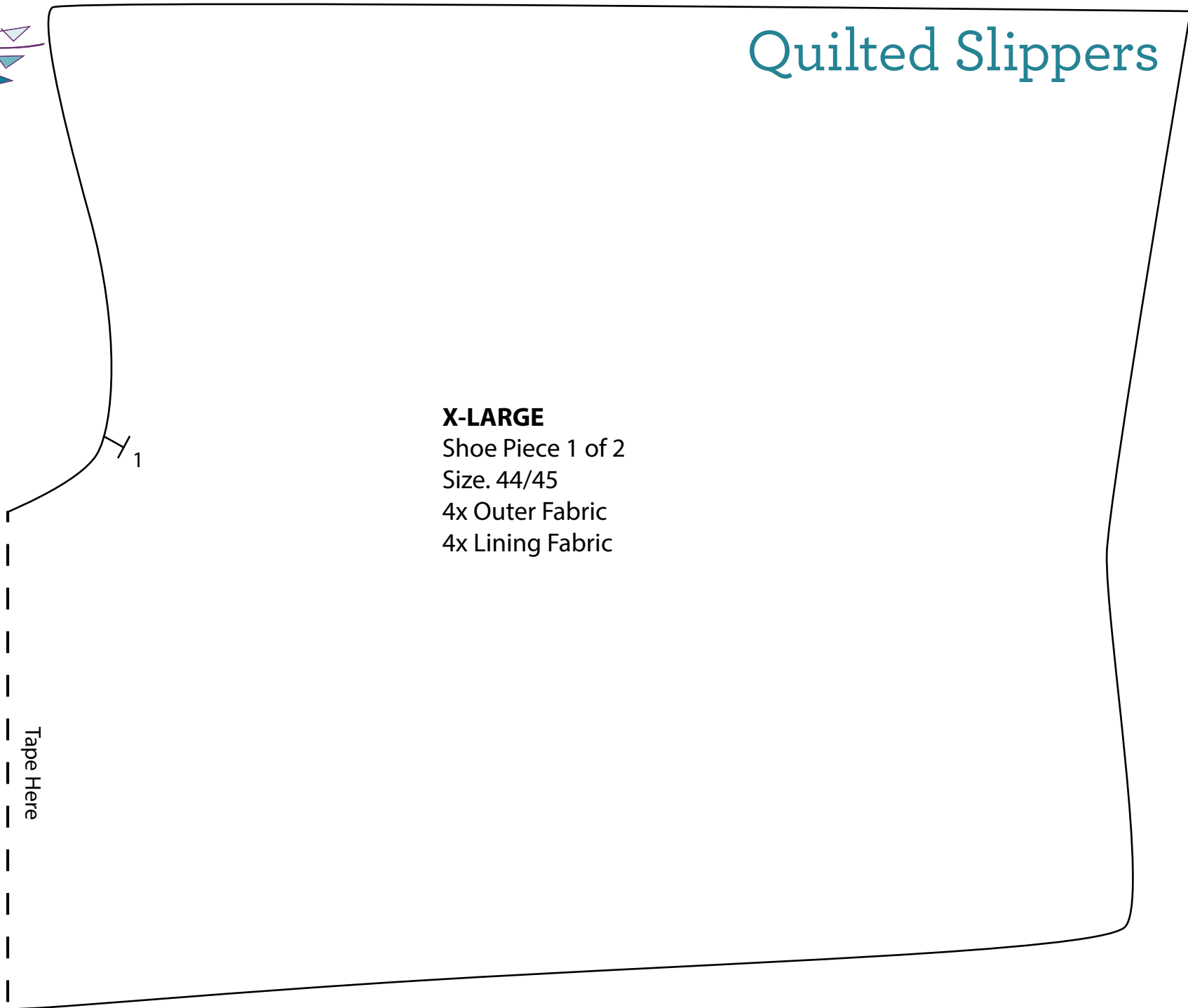
This square should
measure 1" x 1"
(2.54cm x 2.54cm)
when printed.

***** Measure templates before cutting to confirm printing at 100%*****



This square should measure 1" x 1" (2.54cm x 2.54cm) when printed.

*** Measure templates before cutting to confirm printing at 100%***



X-LARGE

Shoe Piece 1 of 2

Size. 44/45

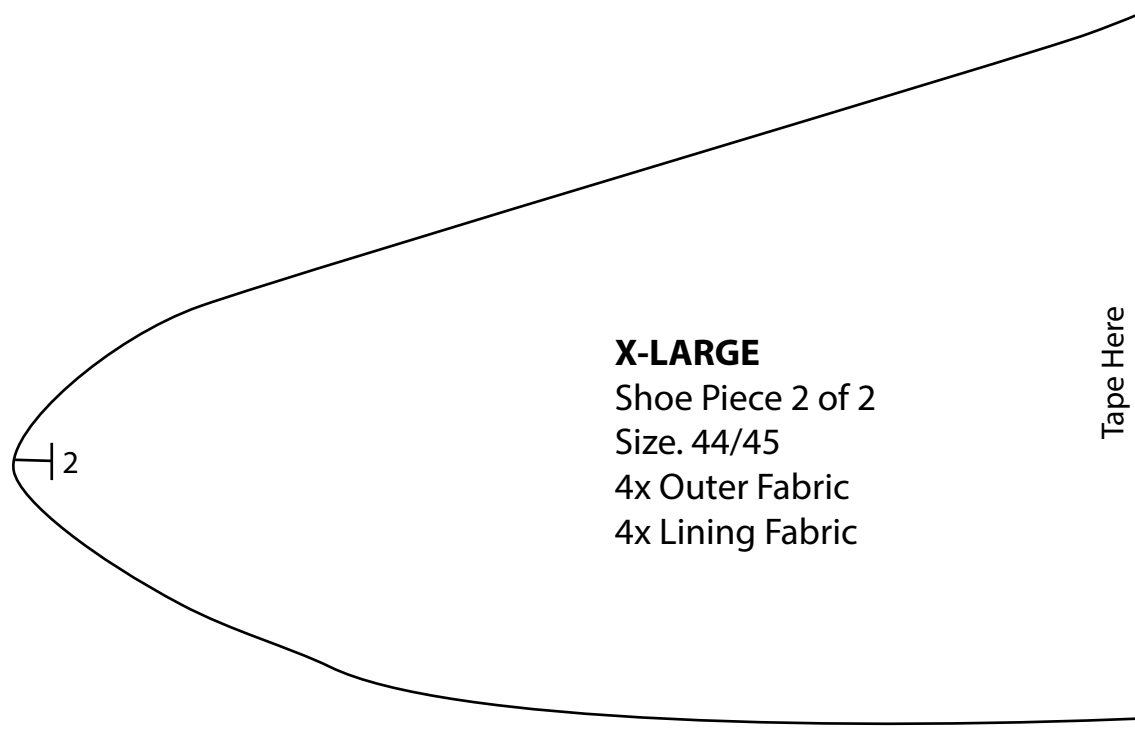
4x Outer Fabric

4x Lining Fabric

Tape Here

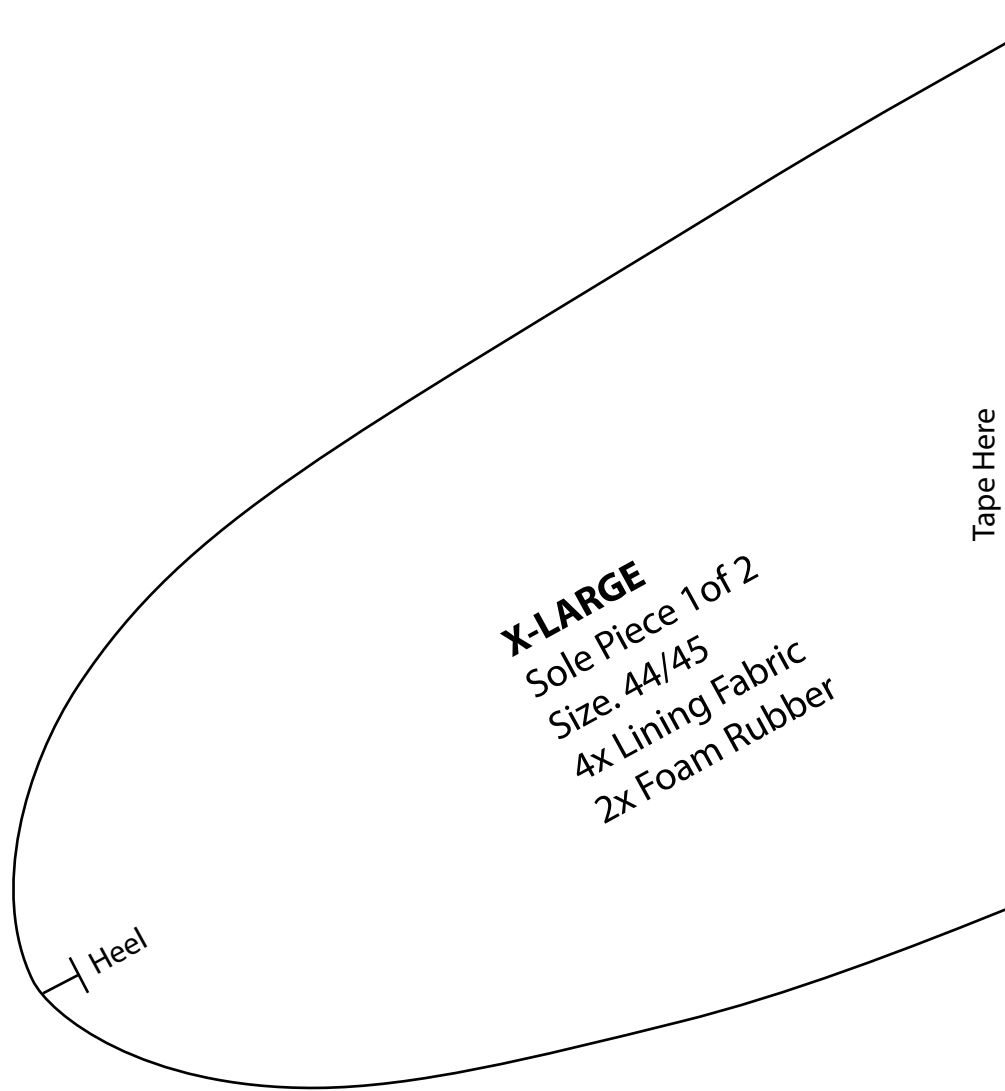
This square should
measure 1" x 1"
(2.54cm x 2.54cm)
when printed.

*** Measure templates before cutting to confirm printing at 100%***



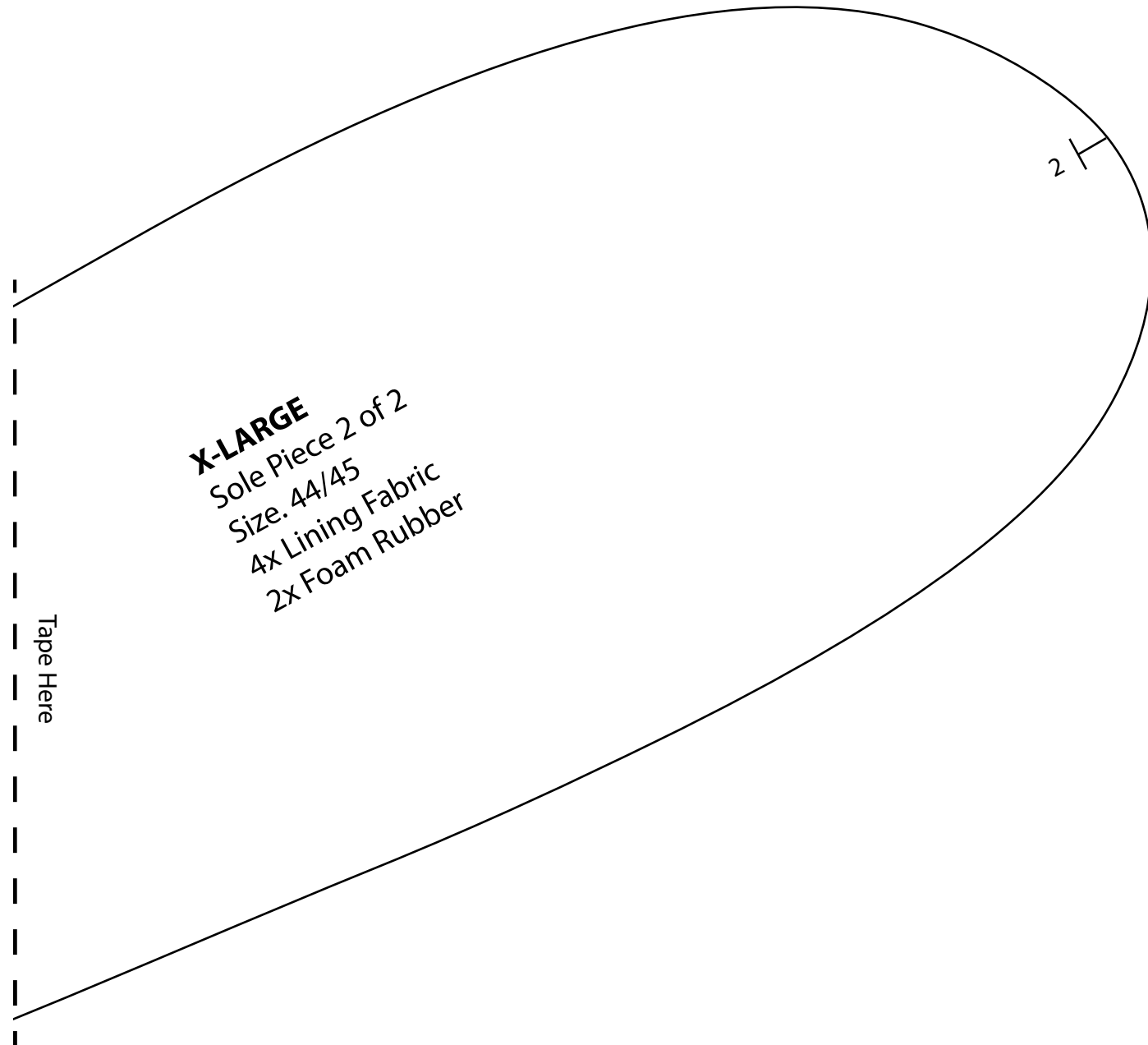
This square should
measure 1" x 1"
(2.54cm x 2.54cm)
when printed.

***** Measure templates before cutting to confirm printing at 100%*****



This square should measure 1" x 1" (2.54cm x 2.54cm) when printed.

***** Measure templates before cutting to confirm printing at 100%*****



This square should measure 1" x 1" (2.54cm x 2.54cm) when printed.

***** Measure templates before cutting to confirm printing at 100%*****