

# JAFTEX

EST. 1930

Free Spirit

Henry Glass & Co., Inc.

STUDIO fabrics  
A Division Of JafTex Corporation  
www.studiofabrics.net

Blank  
QUILTING CORPORATION  
the fabric of inspiration

3wishes  
fabric

A.E. NATHAN COMPANY, INC.

Fabric  
Editions, Inc.

## Learn. Make. Love.

# SIY Project



# Sew It Yourself

The following project was created with fabric that your local retailer may no longer have available. You can re-create these projects by replacing the fabrics shown using the fabric key as a guide for similar colorations or styles.

PROJECT DISCLAIMER: Every effort has been made to ensure that all projects are error free. All the information is presented in good faith, however no warranty can be given not results guaranteed as we have no control over the execution of instructions. Therefore, we assume no responsibility for the use of this information or damages that may occur as a result. When errors are brought to our attention, we make every effort to correct and post a revision as soon as possible. We recommend that you test the project prior to cutting for kits. Finally, all free projects are intended to remain free to you and are not for resale.

SIY - Sew It Yourself™ is a trademark of JafTex Corporation

# Christmas Stocking

••••• A Free Project Sheet  
••••• NOT FOR RESALE  
•••••

Skill Level: Advanced Beginner



Design by Heidi Pridemore

[facebook](#)



Finished Stocking Size: 9" x 18"  
49 West 37th Street, 14th floor, New York, NY 10018  
Toll Free: 800-294-9495  
fax: 212-679-4578  
[www.blankquilting.net](http://www.blankquilting.net)

Please check our website for pattern updates before starting this project.

# Christmas Stocking

## Fabric requirements (per stocking):

3/4 yard of main fabric

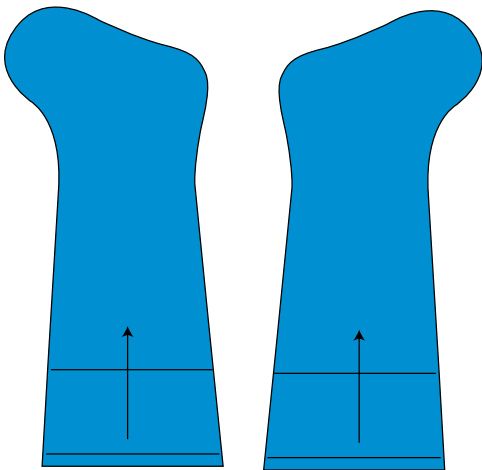
3/4 yard of lining fabric

1/3 yard of fusible fleece

\*this will make one stocking with some excess fabric.

## Cutting Instructions

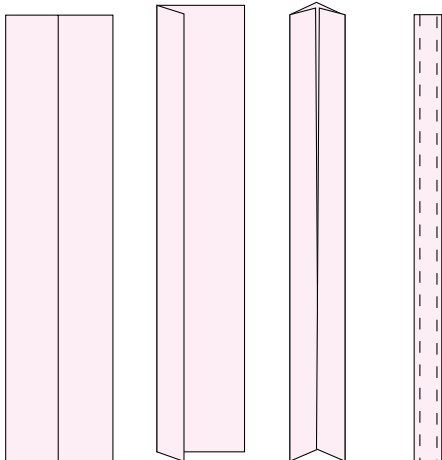
1. Cut 2 stocking pieces from your main fabric
2. Cut 2 stocking pieces from your lining fabric. Lining fabric will be exposed for the top contrast detail of the stocking. Directional fabrics **MUST** be cut with the stocking upside down so the direction of the fabric goes from the toe to the top of the stocking.
3. Cut 2 stocking pieces from fusible fleece interfacing.



The arrow represents the fabric print direction.

## Preparation:

1. Apply fusible fleece to the wrong side of main fabric pieces
2. Make 6" of bias binding or cut 6" of rope or trimming for the hanger

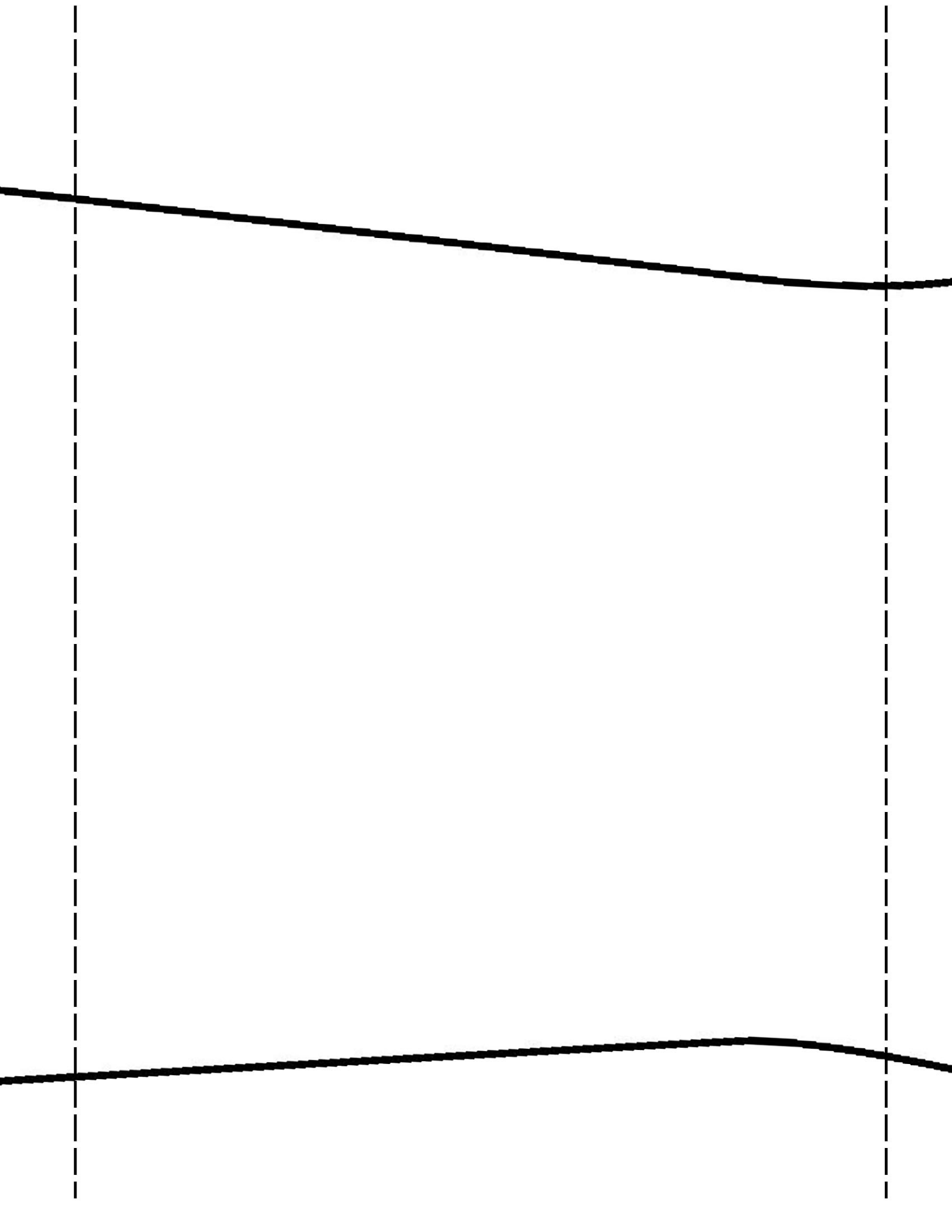


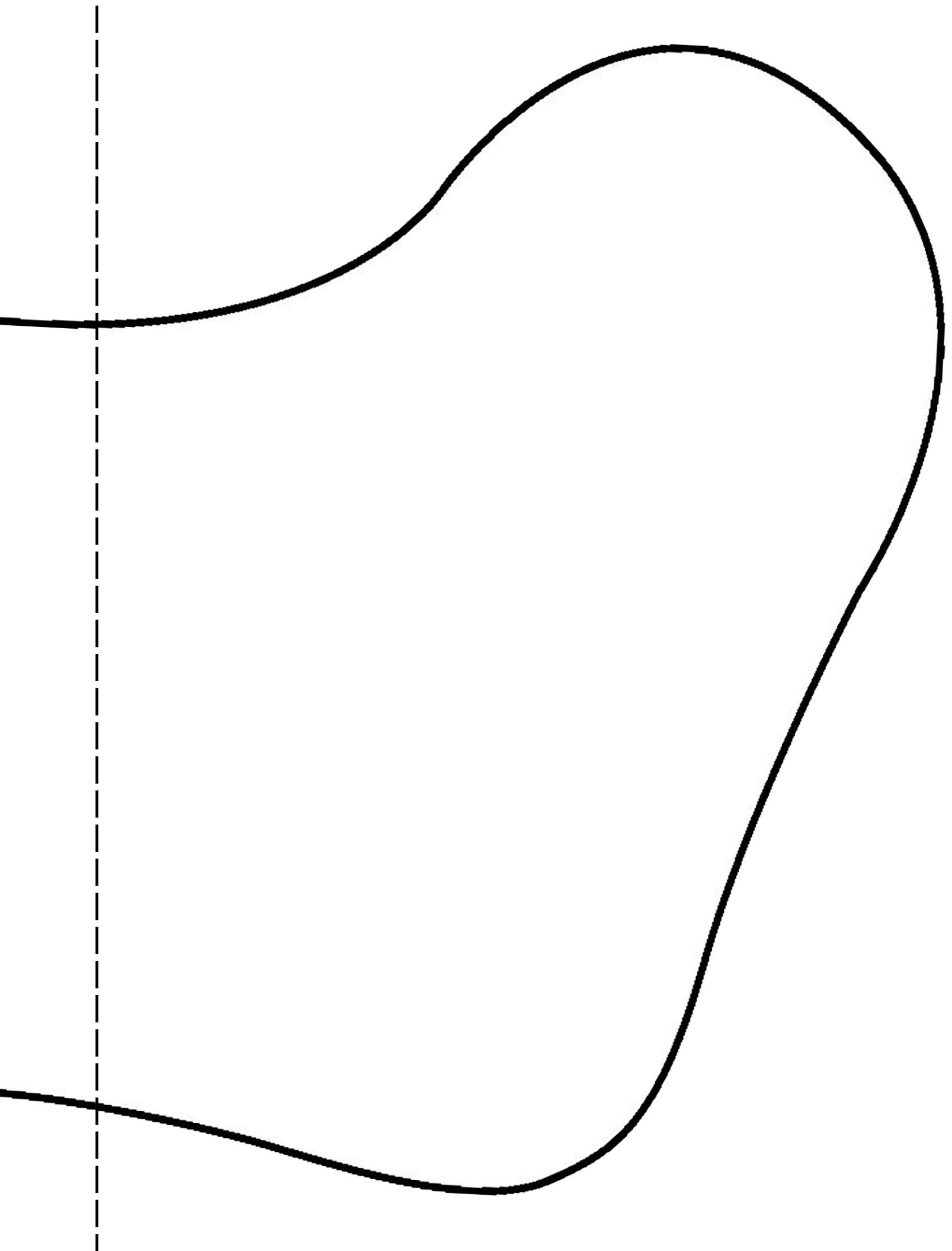
## Sewing Instructions:

*Seam allowance is 1/4" (.64cm)"*

1. Sew main fabric pieces right sides together around all sides except for the top of the stocking.
2. Clip and notch all curved areas. Press
3. Fold binding in half and pin to the right side of one of the lining pieces on the long heel side of the stocking about 4" from the top edge.
4. Sew lining fabric pieces right sides together around all sides except for the top of the stocking leaving a 5" opening on one side, ensuring to catch the binding as you sew. Press.
5. Turn lining piece right sides out and place inside the main piece so that right sides of the fabric are together, matching side seams and raw edges.
6. Sew around the top of the stocking.
7. Turn lining to inside of the stocking and press.
8. Turn down the top edge of the stocking about 4" until the hanger is exposed and cuff is formed. Press.

# Stocking Front and Lining Back





Stocking Back and  
Lining Front

