

JAFTEX

EST. 1930

Free Spirit

Henry Glass & Co., Inc.

STUDIO fabrics
A Division Of JafTex Corporation
www.studiofabrics.net

Blank
QUILTING CORPORATION
the fabric of inspiration

3wishes
fabric

A.E. NATHAN COMPANY, INC.

Fabric
Editions, Inc.

Learn. Make. Love.

SIY Project



Sew It Yourself

The following project was created with fabric that your local retailer may no longer have available. You can re-create these projects by replacing the fabrics shown using the fabric key as a guide for similar colorations or styles.

PROJECT DISCLAIMER: Every effort has been made to ensure that all projects are error free. All the information is presented in good faith, however no warranty can be given not results guaranteed as we have no control over the execution of instructions. Therefore, we assume no responsibility for the use of this information or damages that may occur as a result. When errors are brought to our attention, we make every effort to correct and post a revision as soon as possible. We recommend that you test the project prior to cutting for kits. Finally, all free projects are intended to remain free to you and are not for resale.

SIY - Sew It Yourself™ is a trademark of JafTex Corporation

A Free Project Sheet
NOT FOR RESALE

Equanimity

Pillows



Featuring fabrics from the **Equanimity** collection by **Chelsea DesignWorks** for **STUDIO e fabrics**

Pillow #1 Fabric Requirements

- (A) 5911-79 ½ yard
- (B) 5907-77 ⅛ yard
- (C) 5902-79 ¼ yard
- Backing
5900-97 ½ yard

Pillow #2 Fabric Requirements

- (D) 5900-97 ½ yard
- (E) 5909-11 ⅛ yard
- (F) 5899-11 ⅓ yard
- Backing
5902-73 ½ yard

Pillow #2 Fabric Requirements

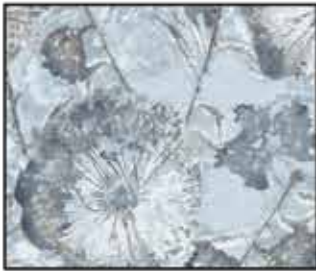
- (B) 5907-77 ¼ yard
- (F) 5899-11 ⅜ yard
- (G) 5902-73 ¼ yard
- (H) 5901-97 ¼ yard
- Backing
5910-11 ½ yard

Additional Supplies Needed

- Batting 70" x 82" (Recommended:
Air Lite® Colour Me 100% Cotton)
- Piecing and sewing thread
- Quilting and sewing supplies
- (2) 18" x 18" pillow forms
- (1) 20" x 20" pillow form

Pillows designed by Heidi Pridemore
Finished Pillow #1 Size 18" x 18"
Finished Pillow #2 Size 20" x 20"
Finished Pillow #3 Size 18" x 18"
Skill Level: Advanced Beginner

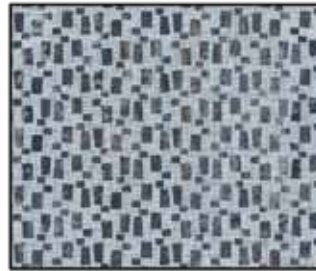
Fabrics in the Collection



Large Floral
Light Blue - 5899-11



Small Floral Texture
Charcoal/Navy - 5900-97



Textured Geo
Light Blue - 5901-19



Textured Geo
Charcoal/Navy - 5901-97



Circles
Light Gray Blue - 5902-73



Circles
Midnight/Charcoal - 5902-79



Linear Texture
Light Blue - 5905-11



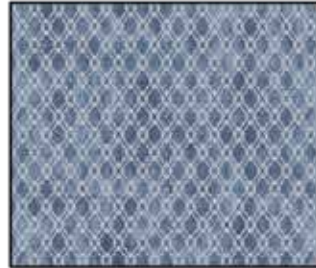
Brushstroke Texture
Midnight - 5907-77



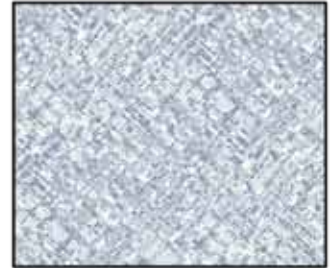
Brushstroke Texture
Smoky Gray - 5907-90



Large Floral Texture
Gray Salt - 5908-91



Small Lattice
Light Blue - 5909-11



Cross-Hatch Texture
Light Blue - 5910-11



Woven Strips
Multi - 5911-79

Select Fabrics from Peppered Cottons



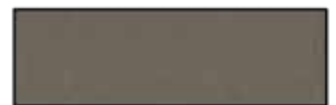
Aluminum
Aluminum-60



Granite
Granite-10



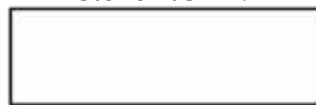
Stonewash
Stonewash-79



True Taupe
True Taupe-99



Tweed
Tweed-37



White Sugar
White Sugar-9

Cutting

Cutting Instructions

Please note: All strips are cut across the width of fabric (WOF) from selvage to selvage edge unless otherwise noted.

WOF= Width of Fabric • LOF = Length of Fabric

Pillow #1

Fabric A (5911-79 Woven Strips – Multi), cut:

- (1) 12 ½" x 18 ½" rectangle.

Fabric B (5907-77 Brushstroke Texture – Midnight), cut:

- (1) 1 ½" x 18 ½" WOF strip.

Fabric C (5902-79 Circles – Midnight/Charcoal), cut:

- (1) 5 ½" x 18 ½" WOF strip.

Backing (5900-97 Small Floral Texture – Charcoal/Navy), cut:

- (1) 13 ½" x WOF strip, sub-cut (2) 13 ½" x 18 ½" rectangles.

Pillow #2

Fabric D (5900-97 Small Floral Texture – Charcoal/Navy), cut:

- (1) 6 ½" square.
- (1) 3" x WOF strip, sub-cut (2) 3" x 15 ½" strips.
- (1) 3" x WOF strip, sub-cut (2) 3" x 20 ½" strips.

Fabric E (5909-11 Small Lattice – Light Blue), cut:

- (1) 2" x WOF strip, sub-cut (2) 2" x 6 ½" strips and (2) 2" x 9 ½" strips.

Fabric F (5899-11 Large Floral – Light Blue), cut:

- (1) 3 ½" x WOF strip, sub-cut (2) 3 ½" x 9 ½" strips.
- (1) 3 ½" x WOF strip, sub-cut (2) 3 ½" x 15 ½" strips.

Backing (5902-73 Circles – Light Gray Blue), cut:

- (1) 14 ½" x WOF strip, sub-cut (2) 14 ½" x 20 ½" rectangles.

Pillow #3

Fabric B (5907-77 Brushstroke Texture – Midnight), cut:

- (2) 1 ½" x 26 ½" WOF strips.
- (1) 1 ½" x WOF strip, sub-cut (2) 1 ½" x 12 ½" strips.

Fabric F (5899-11 Large Floral – Light Blue), cut:

- (2) 5 ½" x 22 ½" WOF strips.

Fabric G (5902-73 Circles – Light Gray Blue), cut:

- (1) 4 ½" x WOF strip, sub-cut (2) 4 ½" x 10 ½" strips.

Fabric H (5901-97 Textured Geo – Charcoal/Navy), cut:

- (1) 4 ½" x 26 ½" WOF strip.

Backing (5910-11 Cross-Hatch Texture – Light Blue), cut:

- (1) 13 ½" x WOF strip, sub-cut (2) 13 ½" x 18 ½" rectangles.

Sewing

Sew using a $\frac{1}{4}$ " seam allowance with right sides together (RST) unless otherwise indicated. Always press towards the darker fabric while assembling, unless otherwise noted by the arrows.

Pillow #1 Assembly

Note: The arrows in figures represent the fabric print direction. Pay attention to the fabric and unit orientations when assembling the various components.

1. Sew (1) $12\frac{1}{2}$ " x $18\frac{1}{2}$ " Fabric A strip to the left side of (1) $1\frac{1}{2}$ " x $18\frac{1}{2}$ " Fabric B strip. Sew (1) $5\frac{1}{2}$ " x $18\frac{1}{2}$ " Fabric C strip to the right side of the Fabric B strip to make the Pillow #1 top (Fig. 1).
2. Turn under the $18\frac{1}{2}$ " edge of (1) $13\frac{1}{2}$ " x $18\frac{1}{2}$ " back rectangle approximately $\frac{1}{4}$ ". Press and repeat to make a finished edge on (1) edge of the back piece. Repeat with the second $13\frac{1}{2}$ " x $18\frac{1}{2}$ " back rectangle.
3. Position and pin the each back envelope flap, right sides together with the pillow front, overlapping the finished edges in the middle and aligning the raw edges with the pillow front (Fig. 2). Stitch around the pillow front and back to complete the pillow.
4. Turn the pillow right side out and slide pillow form into case.

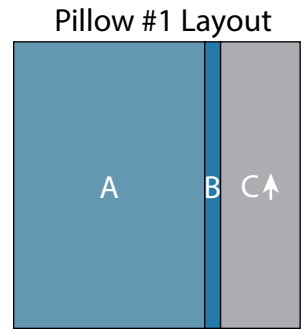


Fig. 1

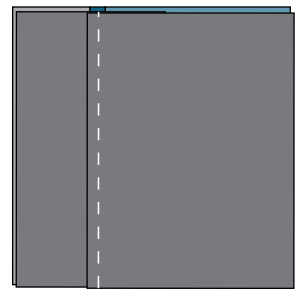


Fig. 2

Pillow #2 Assembly

Note: The arrows in figures represent the fabric print direction. Pay attention to the fabric and unit orientations when assembling the various components.

5. Sew (1) 2 " x $6\frac{1}{2}$ " Fabric E strip to each side of (1) $6\frac{1}{2}$ " Fabric D square. Sew (1) 2 " x $9\frac{1}{2}$ " Fabric E strip to the top and to the bottom of the Fabric D square to make (1) Unit 1 square (Fig. 3).
6. Sew (1) $3\frac{1}{2}$ " x $9\frac{1}{2}$ " Fabric F strip to each side of the Unit 1 square. Sew (1) $3\frac{1}{2}$ " x $15\frac{1}{2}$ " Fabric F strip to the top and to the bottom of the Unit 1 square to make (1) Unit 2 square (Fig. 4).

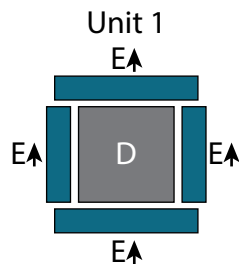


Fig. 3

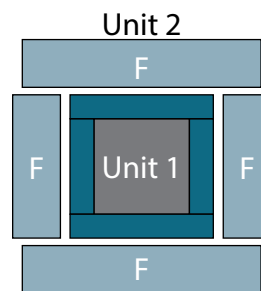


Fig. 4

7. Sew (1) 3" x 15 1/2" Fabric D strip to each side of the Unit 2 square. Sew (1) 3" x 20 1/2" Fabric D strip to the top and to the bottom of the Unit 2 square to make (1) Pillow #2 top (Fig. 5).

8. Turn under the 20 1/2" edge of (1) 14 1/2" x 20 1/2" back rectangle approximately 1/4", press and repeat to make a finished edge on (1) edge of the Back piece. Repeat with the second 14 1/2" x 20 1/2" Back piece.

9. Position and pin the each back envelope flap, right sides together with the pillow front, overlapping the finished edges in the middle and aligning the raw edges with the pillow front (Fig. 2). Stitch around the pillow front and back to complete the pillow.

10. Turn the pillow right side out and slide pillow form into case.

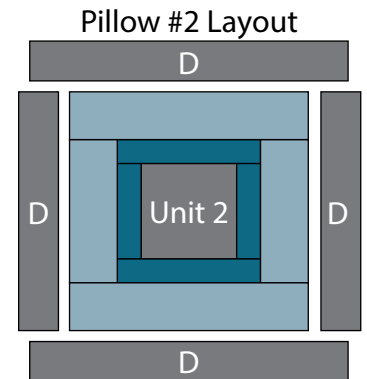


Fig. 5

Pillow #3 Assembly

Note: The arrows in figures represent the fabric print direction. Pay attention to the fabric and unit orientations when assembling the various components.

11. Mark the centers of the long sides of (2) 4 1/2" x 10 1/2" Fabric G strips, (2) 1 1/2" x 12 1/2" Fabric B strips, (2) 5 1/2" x 22 1/2" Fabric F strips, (2) 1 1/2" x 26 1/2" Fabric B strips and (1) 4 1/2" x 26 1/2" Fabric H strip.

12. Align the centers and sew together (1) 4 1/2" x 10 1/2" Fabric G strip, (1) 1 1/2" x 12 1/2" Fabric B strip, (1) 5 1/2" x 22 1/2" Fabric F strip, (1) 1 1/2" x 26 1/2" Fabric B strip, (1) 4 1/2" x 26 1/2" Fabric H strip, (1) 1 1/2" x 26 1/2" Fabric B strip, (1) 5 1/2" x 22 1/2" Fabric F strip, (1) 1 1/2" x 12 1/2" Fabric B strip and (1) 4 1/2" x 10 1/2" Fabric G strip, in that order from left to right. Trim the block to measure 18 1/2" square to make the Pillow #3 top (Fig. 6).

13. Turn under the 13 1/2" edge of (1) 13 1/2" x 18 1/2" back rectangle approximately 1/4", press and repeat to make a finished edge on (1) edge of the Back piece. Repeat with the second 13 1/2" x 18 1/2" Back piece.

14. Position and pin the each back envelope flap, right sides together with the pillow front, overlapping the finished edges in the middle and aligning the raw edges with the pillow front (Fig. 2). Stitch around the pillow front and back to complete the pillow.

15. Turn the pillow right side out and slide pillow form into case.

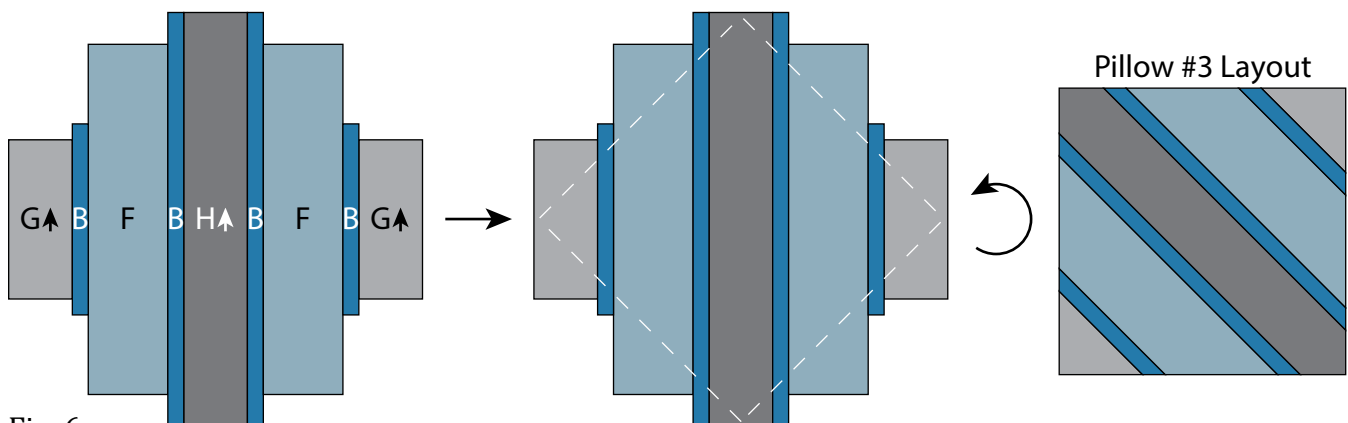


Fig. 6

Every effort has been made to ensure that all projects are error free. All the information is presented in good faith, however no warranty can be given nor results guaranteed as we have no control over the execution of instructions. Therefore, we assume no responsibility for the use of this information or damages that may occur as a result. When errors are brought to our attention, we make every effort to correct and post a revision as soon as possible. Please make sure to check www.studioefabrics.net for pattern updates prior to starting the project. We also recommend that you test the project prior to cutting for kits. Finally, all free projects are intended to remain free to you and are **not for resale**.