

JAFTEX

EST. 1930

Free Spirit

Henry Glass & Co., Inc.

STUDIO fabrics
A Division Of JafTex Corporation
www.studiofabrics.net

Blank
QUILTING CORPORATION
the fabric of inspiration

3wishes
fabric

A.E. NATHAN COMPANY, INC.

Fabric
Editions, Inc.

Learn. Make. Love.

SIY Project



Sew It Yourself

The following project was created with fabric that your local retailer may no longer have available. You can re-create these projects by replacing the fabrics shown using the fabric key as a guide for similar colorations or styles.

PROJECT DISCLAIMER: Every effort has been made to ensure that all projects are error free. All the information is presented in good faith, however no warranty can be given not results guaranteed as we have no control over the execution of instructions. Therefore, we assume no responsibility for the use of this information or damages that may occur as a result. When errors are brought to our attention, we make every effort to correct and post a revision as soon as possible. We recommend that you test the project prior to cutting for kits. Finally, all free projects are intended to remain free to you and are not for resale.

SIY - Sew It Yourself™ is a trademark of JafTex Corporation

•••••
• A Free Project Sheet •
• NOT FOR RESALE •
•••••

Boho Baby

Pillowcase



Blue Version #1




Pink Version #1



Blue Version #2



Pink Version #2

Featuring fabrics from the **Boho Baby** collection by **Diane Eichler** for 

Fabric Requirements (Blue Versions)

Blue Pillowcase #1

(A) 4303-11	1 ¼ yards
(B) 1351-Grass** ...	⅛ yard
(C) 4304-11	⅓ yard

Blue Pillowcase #2

(A) 4305-77	1 yard
(B) 1351-Grass** ...	⅛ yard
(C) 4306-1	⅓ yard

Fabric Requirements (Pink Versions)

Pink Pillowcase #1

(A) 4303-22	1 ¼ yards
(B) 1351-Daffodil** ...	⅛ yard
(C) 4304-22	⅓ yard

Pink Pillowcase #2

(A) 4305-11	1 yard
(B) 1351-Daffodil** ...	⅛ yard
(C) 4306-2	⅓ yard

Additional Supplies Needed

Piecing and sewing thread
Quilting and sewing supplies

Pillowcases designed by
Heidi Pridemore

Finished Pillowcase Size 20" x 30"
Skill Level: Beginner

* Includes Binding

** Just Color! Collection

Fabrics in the Collection



Boho 36" Panel - Blue
4300P-11



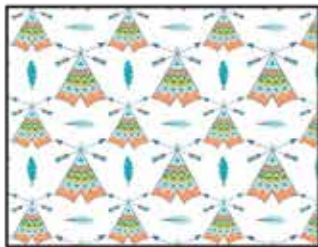
Boho 36" Panel - Pink
4300P-22



Boho Motifs Tossed - Blue
4301-11



Boho Motifs Tossed - Yellow
4301-44



Tee Pees - White/Blue
4302-1



Tee Pees - White/Pink
4302-2



Novelty Stripe - Blue/Green
4303-11



Novelty Stripe - Pink/Aqua
4303-22



Feathers - Blue
4304-11



Feathers - Pink
4304-22



Elephants - Aqua
4305-11



Elephants - Dark Blue
4305-77



Dream Catchers - White/Blue
4306-1



Dream Catchers - White/Pink
4306-2

Select Fabrics from
Just Color!



Daffodil
1351-Daffodil



Grass
1351-Grass



Lava
1351-Lava

Cutting

Cutting Instructions

Please note: All strips are cut across the width of fabric (WOF) from selvage to selvage edge unless otherwise noted.

WOF= Width of Fabric • LOF = Length of Fabric

Pink Version fabrics are listed second where they differ from Blue Version fabrics.

Pillowcase #1

**Fabric A (4303-11 Novelty Stripe – Blue/Green)
(4303-22 Pink/Aqua), cut:**

- (1) 40 ½" x 25 ½" LOF strip.

**Fabric B (1351-Grass Just Color! – Grass)
(1351-Daffodil Just Color! – Daffodil), cut:**

- (1) 1 ¼" x 40 ½" WOF strip.

**Fabric C (4304-11 Feathers – Blue)
(4304-22 Feathers – Pink), cut:**

- (1) 10 ½" x 40 ½" WOF strip.

Pillowcase #2

**Fabric A (4305-77 Elephants – Dark Blue)
(4305-11 Elephants – Aqua), cut:**

- (1) 25 ½" x 40 ½" WOF strip.

**Fabric B (1351-Grass Just Color! – Grass)
(1351-Daffodil Just Color! – Daffodil), cut:**

- (1) 1 ¼" x 40 ½" WOF strip.

**Fabric C (4306-1 Dream Catchers – White/Blue)
(4306-2 Dream Catchers – White/Pink), cut:**

- (1) 10 ½" x 40 ½" WOF strip.

Sewing

Sew using a ¼" seam allowance with right sides together (RST) unless otherwise indicated. Always press towards the darker fabric while assembling, unless otherwise noted by the arrows.

Pillowcase Assembly:

1. Fold (1) 1 ¼" x 40 ½" Fabric B strip in half lengthwise, wrong sides together and press.
2. Place the Folded Fabric B strip along the long side of (1) 25 ½" x 40 ½" Fabric A rectangle, aligning the raw edges and pin in place. Make sure the right side of the Fabric A rectangle is facing up (Fig. 1).
3. Fold (1) 10 ½" x 40 ½" Fabric C strip in half lengthwise, wrong sides together and press.
4. Place the Folded Fabric C strip on top of the Fabric B/ Fabric A pieces, aligning the raw edges and pin in place (Fig. 2).
5. Stitch across the top of the layered fabrics using a ¼" seam allowance to make the pillow case (Fig. 3).

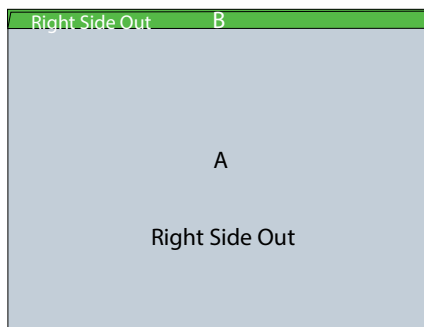


Fig. 1

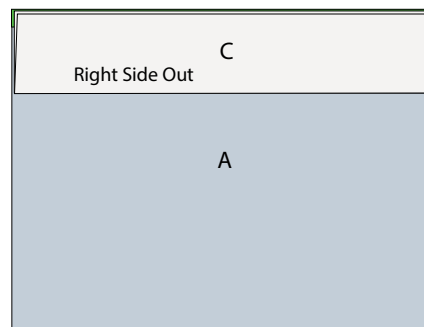


Fig. 2

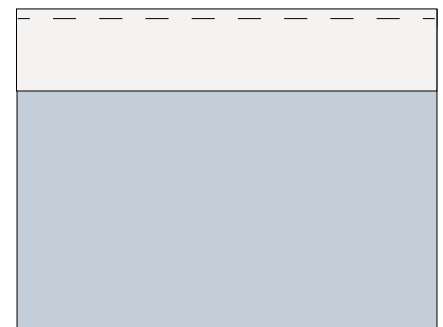


Fig. 3

6. Fold the pillowcase in half width wise, aligning the raw edges of the Fabric A, Fabric B and Fabric C pieces. Pin in place. Stitch Down the long side and across the bottom of the folded pillowcase to complete (Fig. 4).
7. Turn the pillow case right side out and press (Fig. 5).
8. Repeat Steps 1-7 to make the second pillowcase (Fig. 6).

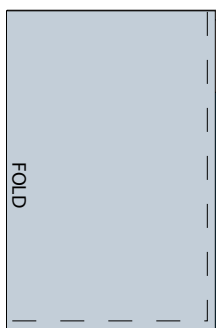


Fig. 4

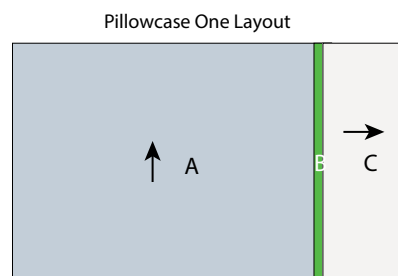


Fig. 5

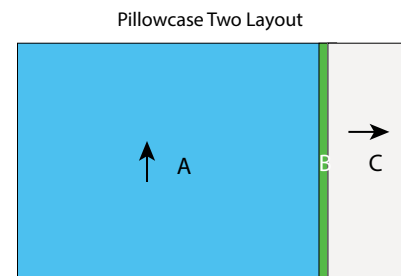


Fig. 6

Every effort has been made to ensure that all projects are error free. All the information is presented in good faith, however no warranty can be given nor results guaranteed as we have no control over the execution of instructions. Therefore, we assume no responsibility for the use of this information or damages that may occur as a result. When errors are brought to our attention, we make every effort to correct and post a revision as soon as possible. Please make sure to check www.studioefabrics.com for pattern updates prior to starting the project. We also recommend that you test the project prior to cutting for kits. Finally, all free projects are intended to remain free to you and are **not for resale**.