

JAFTEX

EST. 1930

Free Spirit

Henry Glass & Co., Inc.

STUDIO fabrics
A Division Of JafTex Corporation
www.studiofabrics.net

Blank
QUILTING CORPORATION
the fabric of inspiration

3wishes
fabric

A.E. NATHAN COMPANY, INC.

Fabric
Editions, Inc.

Learn. Make. Love.

SIY Project



Sew It Yourself

The following project was created with fabric that your local retailer may no longer have available. You can re-create these projects by replacing the fabrics shown using the fabric key as a guide for similar colorations or styles.

PROJECT DISCLAIMER: Every effort has been made to ensure that all projects are error free. All the information is presented in good faith, however no warranty can be given not results guaranteed as we have no control over the execution of instructions. Therefore, we assume no responsibility for the use of this information or damages that may occur as a result. When errors are brought to our attention, we make every effort to correct and post a revision as soon as possible. We recommend that you test the project prior to cutting for kits. Finally, all free projects are intended to remain free to you and are not for resale.

SIY - Sew It Yourself™ is a trademark of JafTex Corporation

Finished size: Fits bust 32" - 36"

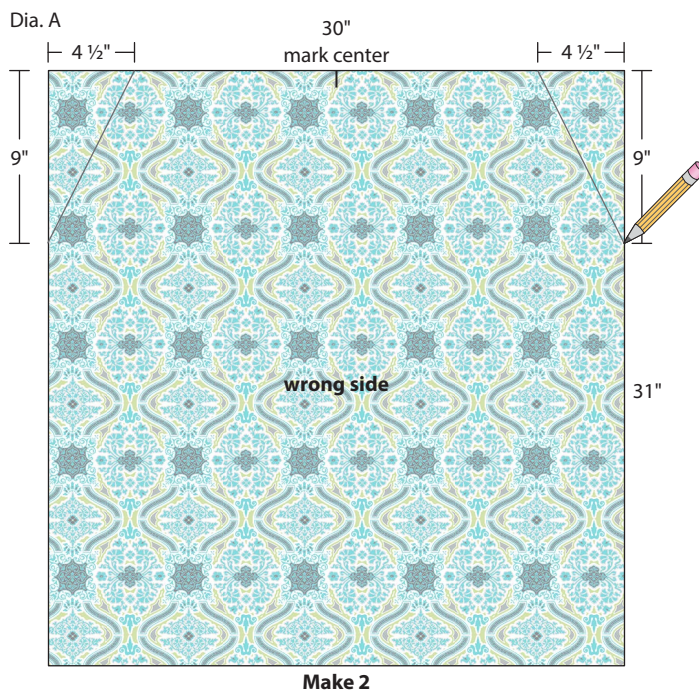
Supplies Needed

- 2 yds Multi Large Damask
- ¼ yd mid-weight fusible interfacing
- Removable marker
- Paper
- Yardstick
- Scissors
- Basic sewing supplies
- Sewing machine
- Iron & pressing surface

Instructions

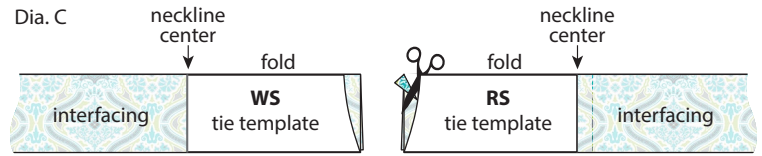
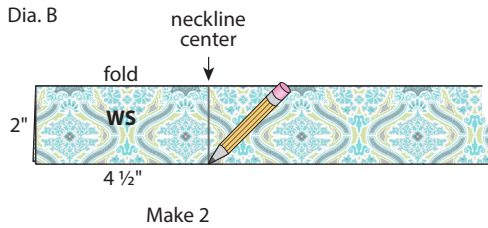
Pre-wash and press fabric before cutting pieces. Sew fabrics right sides together (RST) with a ½" seam allowance unless otherwise noted. Press seams open unless directed otherwise. Finish edges with zigzag or overlock/serge stitching. Back stitch at beginning and end to secure seams, unless indicated otherwise.

1. Cutting: 2 - 30" x 31" (tunic front and back)
2 - 4" x 33" (ties)
4 - 2" x 20" (interfacing)
2. Making the armholes: Fold tunic front and back in half **RST** so long edges meet to find the center and mark on the **wrong** side of top edge.
3. Lay the front on a flat surface **wrong** side up with the center mark at the top. Measure in 4 ½" from each side and mark. Measure 9" down each side from the top edge and mark. Draw a diagonal line connecting the marks on each side and cut along the drawn lines (Dia. A). Fold and press ¼" to the **wrong** side twice. Sew close to pressed edge to hem the armhole. Repeat for the back.
4. Making the neckline: Leaving long thread tails on each end, sew a row of long gathering stitches ¼" from the top edge and a second row ⅜" from the edge for both the front and back. **Note:** Do not backstitch.
5. Making the ties: Fold ties in half **wrong** sides together so long edges meet and press fold firmly.
6. Open out ties with **wrong** side up, place long edge of interfacing strip at fold with short ends matching. Following manufacturer's instructions, fuse in place. Add a second interfacing piece to the end of the first overlapping ends by ¼". Trim excess interfacing even with tie end; fuse. Repeat for second tie.

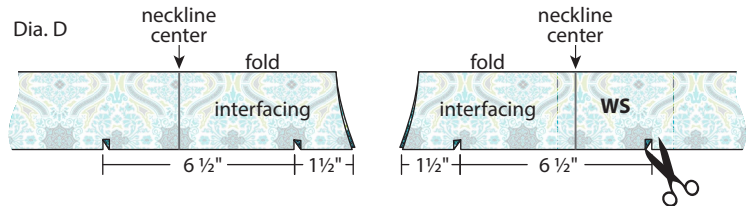


Project Instructions Continued

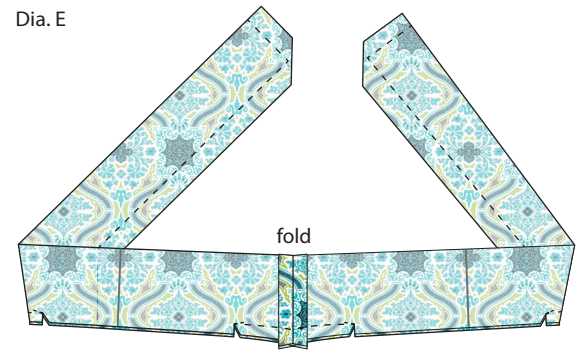
7. Fold ties in half **RST** so long edges meet, place them on a flat surface end to end with interfaced sides facing up. Mark the neckline center 4 ½" from the end on each tie (Dia. B). Trace the tie template and cut out along outside edges. Place it on left tie end; trace and cut on line (Dia. C). Repeat for second tie.



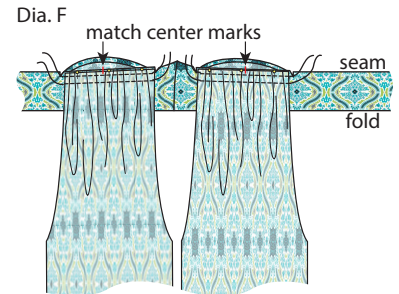
8. Leaving ties in same position, mark 1 ½" from the corner of the bottom edge, then measure and mark 6 ½" from the 1 ½" mark (Dia. D). Clip ¼" into seam allowances at the 6 ½" marks.



9. Sew curved edges together; press seams open. Fold tie in half **RST** and sew, stopping stitches and backstitching at 6 ½" neckline marks to leave an opening for turning (Dia. E). Clip corners diagonally and turn ends right side out. Press tie, pressing under the seam allowance on tie opening.



10. With **RST**, match up center marks and edges of neckline with marks on ties, gathering neckline to fit; pin (Dia. F). Sew, turn under edge of tie; pin in place on neckline. Topstitch around the edges of tie enclosing the neckline and closing the opening as you sew.



11. With **RST**, baste the side seams. Try tunic on to check the fit. If alteration is needed, put tunic on inside out and pin to desired fit; baste accordingly. Sew side seams, trim seam allowances to ½" if needed and finish seams. Press seams open.

12. Finishing: Press bottom edge ¼" to the **wrong** side, then again 1" and sew close to edge to hem.

13. Wear tunic with the ties in a bow or square knot.

