

# JAFTEX

EST. 1930

Free Spirit

Henry Glass & Co., Inc.

STUDIO fabrics  
A Division Of JafTex Corporation  
www.studiofabrics.net

Blank  
QUILTING CORPORATION  
the fabric of inspiration

3wishes  
fabric

A.E. NATHAN COMPANY, INC.

Fabric  
Editions, Inc.

## Learn. Make. Love.

# SIY Project



# Sew It Yourself

The following project was created with fabric that your local retailer may no longer have available. You can re-create these projects by replacing the fabrics shown using the fabric key as a guide for similar colorations or styles.

PROJECT DISCLAIMER: Every effort has been made to ensure that all projects are error free. All the information is presented in good faith, however no warranty can be given not results guaranteed as we have no control over the execution of instructions. Therefore, we assume no responsibility for the use of this information or damages that may occur as a result. When errors are brought to our attention, we make every effort to correct and post a revision as soon as possible. We recommend that you test the project prior to cutting for kits. Finally, all free projects are intended to remain free to you and are not for resale.

SIY - Sew It Yourself™ is a trademark of JafTex Corporation



## Canvas Bins (2)

Finished size: 7 1/2" x 9 1/2" x 6 1/2"

### SUPPLIES NEEDED

- 1 Fabric yard Canvas (Fabric A)
- 1 Fabric yard Cotton (Fabric B)
- 1 yard Pellon® Peltex® 71F
- 2 - 7 1/4" x 9" Firm cardboard for bottom inserts
- Long, ball-headed pins
- Jeans needle (size 16/100)
- Coordinating thread
- Basic sewing supplies
- Rotary cutter, acrylic ruler, self-healing mat (optional)
- Sewing machine
- Iron and pressing cloth

### BEFORE YOU BEGIN

Read all instructions before beginning project. Do not prewash fabrics. Press fabrics with dry iron on cotton setting before cutting pieces. Use a 1/4" seam allowance and sew fabrics with right sides together (RST) unless otherwise noted.

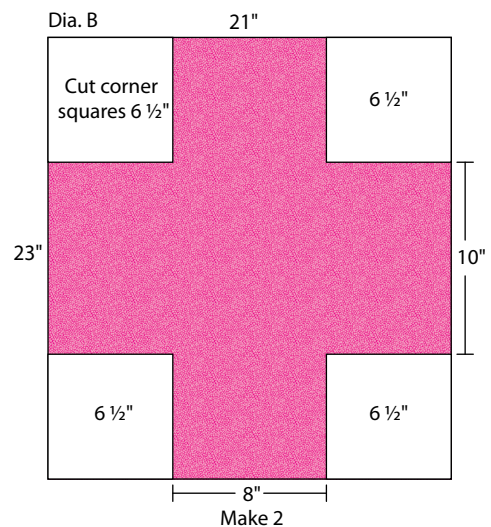
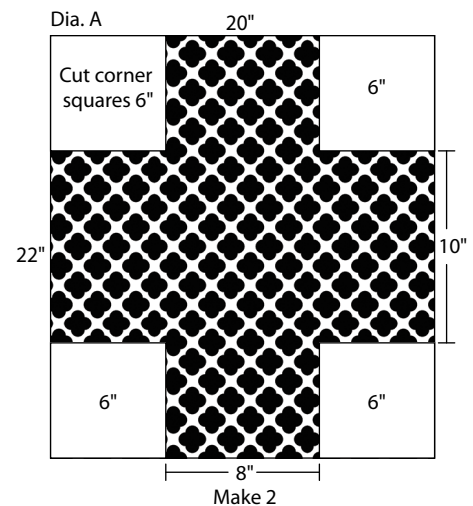
### CUTTING

- Fabric A: 2 - 20" x 22" (Bins)  
4 - 2 1/4" x 5" (Handle linings)
- Fabric B: 2 - 21" x 23" (Bin linings)  
4 - 2 1/4" x 6" (Handles)
- Peltex® 71F: 2 - 20" x 22" (Bag)

### SEWING

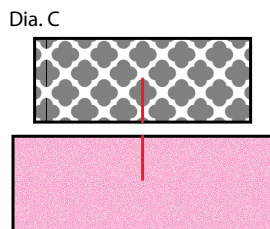
#### Bins:

1. Following manufacturer's instructions, fuse Peltex® pieces to the **wrong** side of each canvas bin using the pressing cloth.
2. Draw a 6" square in each corner of each bin and cut out the squares. The top and bottom edges will measure 8" across and the side edges will measure 10" (Dia. A). **Note:** *The bin will look like a plus sign.*
3. Draw a 6 1/2" square in each corner of lining pieces and repeat Step 2 to cut out the corners (Dia. B).

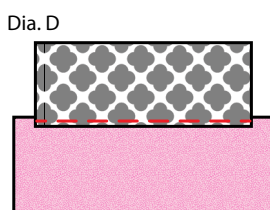


**Handles:**

4. On the **wrong** side, mark the center of one long edge of each handle and handle lining. Place a handle and handle lining RST matching the center marks; sew (Dia. C).



Press seams toward the handle lining. Repeat with remaining pieces to make a total of four handles (Dia. D).



5. With **wrong** sides together, fold long edges to the center seam; press well (Dia. E).

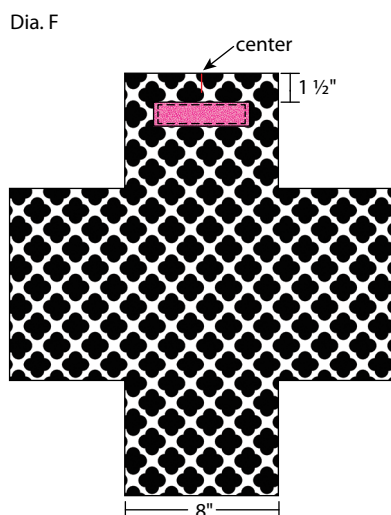


6. Fold handles in half enclosing cut edges; topstitch  $\frac{1}{8}$ " from long edges.

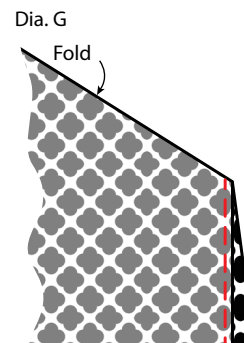
7. Fold handle fabric to the lining side on the short ends; press well. Trim ends to  $\frac{1}{4}$ " on all four handles.

8. On the 8" sides of each bin mark  $1\frac{1}{2}$ " from the top edge then mark the center of this line 4" from one edge. Repeat on all 8" sides of the bins.

9. Fold handles in half RST (Dia. F) to find the center and line up with marks on bins. Pin in place and sew securely to bins  $\frac{1}{8}$ " from each short end through all layers. Repeat to attach the remaining three handles.



10. To make the corners, fold the bin RST together and match the edges of each bin corner; pin (Dia. G). Sew from the inside toward the outer edges of the bin. Repeat with remaining three corners of the bin. Press seams open. Turn right side out. To box bin, press bottom edges and side seams flat.

**Lining:**

11. On the **wrong** side of the lining, draw a line 1" from top edges as a guideline for folding the lining. Follow Step 10 to sew the lining corners.

12. Fold top edges of lining to the marked line and press well. Press over another  $\frac{1}{2}$ " at the top edges of the lining. Leave lining **wrong** side out.

13. Place lining inside the bin **wrong** sides together with the folded edge on the outside of the bin to form a bound top edge; pin well.

**FINISHING**

14. Topstitch close to folded edge of lining through all layers. Insert  $7\frac{1}{4}$ " x 9" firm cardboard in bottom.

**FINISHED CARE INSTRUCTIONS**

Spot clean with cool water if needed.